

GIUNTI AD INNESTO RAPIDO A DOPPIA TENUTA
 AUTOMATIC QUICK COUPLINGS WITH DOUBLE SHUT-OFF
 KUPPLUNGEN MIT BEIDSEITIGER ABSPERRUNG
 COUPLEURS À DOUBLE OBTURATIONS
 ENCHUFES RÁPIDOS DE DOBLE OBTURACIÓN
 ENGATE RÁPIDO COM DUPLA RETENÇÃO

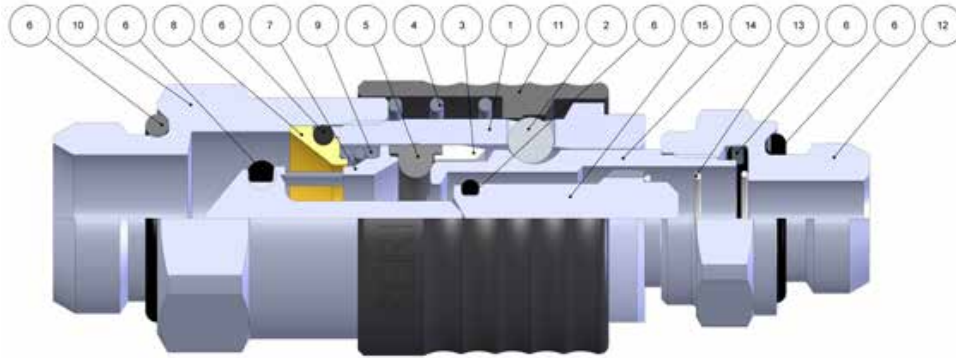


CARATTERISTICHE TECNICHE
 TECHNICAL CHARACTERISTICS
 TECHNISCHE ANGABEN
 CARACTÉRISTIQUES TECHNIQUES
 CARACTERÍSTICAS TÉCNICAS
 CARACTERÍSTICAS TÉCNICAS

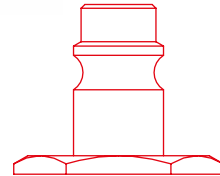
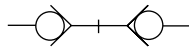


Norma di Riferimento
 Reference standard
 Entspricht der Norm
 Norme de référence
 Normativa de referencia
 Norma de referência

1907/2006 REACH ✓	2011/65/CE RoHS ✓
PED 2014/68/EU	SILICON FREE



FKM A RICHIESTA
 IF REQUESTED FKM
 FKM AUF ANFRAGE
 FKM SUR DEMANDE
 FKM BAJO DEMANDA
 FKM SOB ENCOMENDA



1:1

Materiali e Componenti	IT	Component Parts and Materials	GB	Komponenten und Materialien	DE
1 Corpo in Ottone Nichelato		1 Nickel-Plated Brass Body		1 Körper Messing Vernickelt	
2 Sfera in Acciaio AISI 420		2 Stainless Steel AISI 420 Balls		2 Kugel Edelstahl AISI 420	
3 Anello Guida Innesto in Ottone Nichelato		3 Nickel-Plated Brass Guide Ring Coupling		3 Stecker Führungsring Messing Vernickelt	
4 Molla Ghiera in Acciaio AISI 302		4 Stainless Steel AISI 302 Ring Nut Spring		4 Entriegelungsfeder Edelstahl AISI 302	
5 Guarnizione Innesto Sagomata in NBR		5 NBR Plug Molded Seals		5 O-Ring NBR	
6 Guarnizione O-Ring in NBR		6 NBR O-Ring Seals		6 O-Ring NBR	
7 Otturatore in Ottone		7 Brass Shutter		7 Verschluss Messing	
8 Anello in Ottone		8 Brass Ring		8 Ring Messing	
9 Molla Otturatore Presa in Acciaio AISI 302		9 Stainless Steel AISI 302 Shutter Spring		9 Verschlussfeder Edelstahl AISI 302	
10 Attacco Terminale in Ottone Nichelato		10 Nickel-Plated Brass Coupling Back Part		10 Einschraubkörper Messing Vernickelt	
11 Ghiera in Ottone Zincato Nero		11 Black Zinc Plated Brass Sleeve		11 Entriegelungshülse Messing Schwarze Zink	
12 Innesto in Ottone Nichelato		12 Nickel-Plated Brass Plug Outline		12 Stecker Messing Vernickelt	
13 Molla Otturatore Innesto AISI 302		13 Stainless Steel AISI 302 Shutter Spring		13 Verschlussfeder Edelstahl AISI 302	
14 Profilo Innesto Ottone Nichelato		14 Nickel-Plated Brass Plug		14 Stecker Messing Vernickelt	
15 Otturatore Innesto Ottone Nichelato		15 Nickel-Plated Brass Shutter		15 Verschluss Messing Vernickelt	

Matériaux et Composants	FR	Materiales y Componentes	ES	Materiais e Componentes	PT
1 Corps: Laiton Nickelé		1 Cuerpo en latón niquelado		1 Corpo em Latão Niquelado	
2 Bille: Acier Inoxydable AISI 420		2 Esfera en acero AISI 420		2 Esfera em aço AISI 420	
3 Bague de Guidage: Laiton Nickelé		3 Anillo guía enchufe en latón niquelado		3 Anel guia do plug em latão niquelado	
4 Ressort de Bague: Acier Inoxydable AISI 302		4 Muelle tuerca en acero AISI 302		4 Mola da porca em aço AISI 302	
5 Joint Torique en NBR		5 Tapón obturador sagomata NBR		5 Vedações em NBR moldada para plug	
6 Joint Torique en NBR		6 Junta tórica en NBR		6 Vedação O-Ring em NBR	
7 Clapet: Laiton		7 Obturador en latón		7 Obturador em latão	
8 Bague en Laiton		8 Anillo en latón		8 Anel em latão	
9 Ressort de Clapet: Acier Inoxydable AISI 302		9 Muelle obturador en acero AISI 302		9 Mola do obturador em aço AISI 302	
10 Corps: Laiton Nickelé		10 Terminal de conexión en latón niquelado		10 Conexão terminal em latão niquelado	
11 Bague: Laiton Zinc Noir		11 Tuerca en latón Zinc Negro		11 Porca em latão zinco preto	
12 Embout: Laiton Nickelé		12 Enchufe en latón niquelado		12 Plug em latão niquelado	
13 Ressort de Clapet: Acier Inoxydable AISI 302		13 Muelle obturador en acero AISI 302		13 Mola do obturador em aço AISI 302	
14 Embout: Laiton Nickelé		14 Perfil enchufe en latón niquelado		14 Perfil plug em latão niquelado	
15 Clapet: Laiton Nickelé		15 Obturador en latón niquelado		15 Obturador em latão niquelado	

Архангельск (8182)63-90-72
 Астана (7172)727-132
 Астрахань (8512)99-46-04
 Барнаул (3852)73-04-60
 Белгород (4722)40-23-64
 Брянск (4832)59-03-52
 Владивосток (423)249-28-31
 Волгоград (844)278-03-48
 Вологда (8172)26-41-59
 Воронеж (473)204-51-73
 Екатеринбург (343)384-55-89
 Иваново (4932)77-34-06

Ижевск (3412)26-03-58
 Иркутск (395)279-98-46
 Казань (843)206-01-48
 Калининград (4012)72-03-81
 Калуга (4842)92-23-67
 Кемерово (3842)65-04-62
 Киров (8332)68-02-04
 Краснодар (861)203-40-90
 Красноярск (391)204-63-61
 Курск (4712)77-13-04
 Липецк (4742)52-20-81
 Киргизия (996)312-96-26-47

Магнитогорск (3519)55-03-13
 Москва (495)268-04-70
 Мурманск (8152)59-64-93
 Набережные Челны (8552)20-53-41
 Нижний Новгород (831)429-08-12
 Новокузнецк (3843)20-46-81
 Новосибирск (383)227-86-73
 Омск (3812)21-46-40
 Орел (4862)44-53-42
 Оренбург (3532)37-68-04
 Пенза (8412)22-31-16
 Казахстан (772)734-952-31

Пермь (342)205-81-47
 Ростов-на-Дону (863)308-18-15
 Рязань (4912)46-61-64
 Самара (846)206-03-16
 Санкт-Петербург (812)309-46-40
 Саратов (845)249-38-78
 Севастополь (8692)22-31-93
 Симферополь (3652)67-13-56
 Смоленск (4812)29-41-54
 Сочи (862)225-72-31
 Ставрополь (8652)20-65-13
 Таджикистан (992)427-82-92-69

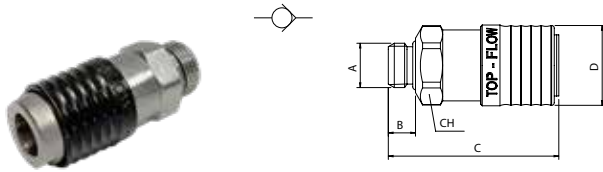
Сургут (3462)77-98-35
 Тверь (4822)63-31-35
 Томск (3822)98-41-53
 Тула (4872)74-02-29
 Тюмень (3452)66-21-18
 Ульяновск (8422)24-23-59
 Уфа (347)229-48-12
 Хабаровск (4212)92-98-04
 Челябинск (351)202-03-61
 Череповец (8202)49-02-64
 Ярославль (4852)69-52-93

**Pressione d'esercizio***Working Pressures**Betriebsdruck**Pression de service**Presión de Ejercicio**Pressão de Trabalho***16 bar****Max pressione statica (no pulsazioni)***Maximum static pressure (no pulsations)**Maximaler statischer Betriebsdruck (ohne pulsations)**Pression statique maximale (sans pulsation)**Presión estática máxima (sin pulsaciones)**Pressão estática máxima (sem pulsações)***35 bar****Temperature***Temperatures**Temperatur**Températures**Temperaturas**Temperaturas***- 20 °C****+ 80 °C****Con Guarnizioni FKM***With FKM Seals**Mit FKM Dichtung**Avec joints FKM**Con juntas FKM**Com Vedação em FKM***- 10 °C****+ 200 °C****Fluidi compatibili***Aria compressa / Acqua***Fluids***Compressed air / Water***Geeignete Medien***Druckluft / Wasser***Fluides compatibles***Air comprimé / Eau***Fluidos compatibles***Aire comprimido / Agua***Fluidos compatíveis***Ar comprimido / Água***Filettatura****IT***Gas cilindrica conforme ISO 228 Classe A.***Threads****GB***Parallel gas in conformity with ISO 228 Class A.***Gewindearten****DE***Zylindrisches Gewinde nach Norm ISO 228 Classe A.***Filetages****FR***Filetage cylindrique conforme: ISO 228 Classe A.***Roscas****ES***Gas cilíndrica conforme ISO 228 Clase A.***Roscas****PT***Gas paralela conforme ISO 228 Classe A.*

741

PRESA MASCHIO CILINDRICO CON OR

MALE CILINDRIC SOCKET WITH OR
 VERSCHLUSS-KUPPLUNG MIT AUSSENGEWINDE ZYLINDRISCH MIT OR
 COUPLEUR MÂLE CYLINDRIQUE AVEC OR
 ENCHUFE MACHO CILINDRICA CON OR
 SOQUETE COM ROSCA MACHO PARALELA COM OR

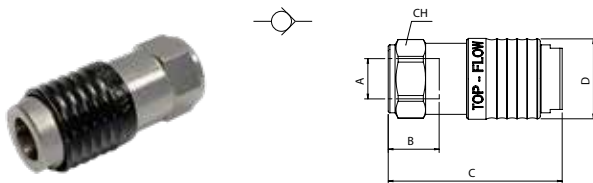


Code	A	B	C	D	CH	Pack.
00741 00 002	1/4	8	49.5	24	21	10
00741 00 003	3/8	9	50.5	24	21	10
00741 00 004	1/2	10	51.5	24	25	10

742

PRESA FEMMINA

FEMALE SOCKET
 VERSCHLUSS-KUPPLUNG MIT INNENGEWINDE
 COUPLEUR FEMELLE
 ENCHUFE HEMBRA
 SOQUETE COM ROSCA FÊMEA

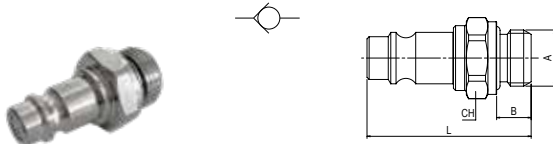


Code	A	B	C	D	CH	Pack.
00742 00 002	1/4	12	50.5	24	21	10
00742 00 003	3/8	12	51.5	24	21	10
00742 00 004	1/2	15	56	24	24	10

841

INNESTO MASCHIO CILINDRICO CON OR

MALE PLUG (PARALLEL) WITH OR
 STECKER MIT AUSSENGEWINDE KONISCH MIT OR
 EMBOUT MÂLE AVEC OR
 ADAPTADOR MACHO CILÍNDRICO CON OR
 PLUG COM ROSCA MACHO PARALELA COM OR



Code	A	B	L	CH	Pack.
00841 00 002	1/4	8	38	17	10
00841 00 003	3/8	9	39	20	10
00841 00 004	1/2	10	42	25	10

Utilizzare solo con prese per innesti otturati.

Using only with socket for shutter plug.

Nur Mit Verschluss-Kupplungen Beidseitig Absperrend Einsetzbar.

Utilisable avec pleurico à obturation.

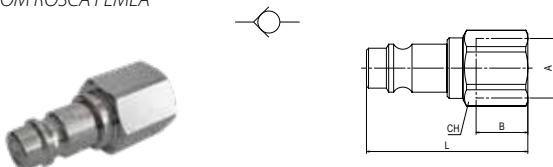
Utilizar solo con enchufes para adaptador obturado.

Utilizar somente com soquete para plug com retenção.

842

INNESTO FEMMINA

FEMALE PLUG
 STECKER MIT INNENGEWINDE
 EMBOUT FEMELLE
 ADAPTADOR HEMBRA
 PLUG COM ROSCA FÊMEA



Code	A	B	L	CH	Pack.
00842 00 002	1/4	11	40.5	17	10
00842 00 003	3/8	12	42.5	19	10
00842 00 004	1/2	15	46.5	24	10

Utilizzare solo con prese per innesti otturati.

Using only with socket for shutter plug.

Nur Mit Verschluss-Kupplungen Beidseitig Absperrend Einsetzbar.

Utilisable avec pleurico à obturation.

Utilizar solo con enchufes para adaptador obturado.

Utilizar somente com soquete para plug com retenção.

Архангельск (8182)63-90-72
 Астана (7172)727-132
 Астрахань (8512)99-46-04
 Барнаул (3852)73-04-60
 Белгород (4722)40-23-64
 Брянск (4832)59-03-52
 Владивосток (423)249-28-31
 Волгоград (844)278-03-48
 Вологда (8172)26-41-59
 Воронеж (473)204-51-73
 Екатеринбург (343)384-55-89
 Иваново (4932)77-34-06

Ижевск (3412)26-03-58
 Иркутск (395)279-98-46
 Казань (843)206-01-48
 Калининград (4012)72-03-81
 Калуга (4842)92-23-67
 Кемерово (3842)65-04-62
 Киров (8332)68-02-04
 Краснодар (861)203-40-90
 Красноярск (391)204-63-61
 Курск (4712)77-13-04
 Липецк (4742)52-20-81
 Киргизия (996)312-96-26-47

Магнитогорск (3519)55-03-13
 Москва (495)268-04-70
 Мурманск (8152)59-64-93
 Набережные Челны (8552)20-53-41
 Нижний Новгород (831)429-08-12
 Новокузнецк (3843)20-46-81
 Новосибирск (383)227-86-73
 Омск (3812)21-46-40
 Орел (4862)44-53-42
 Оренбург (3532)37-68-04
 Пенза (8412)22-31-16
 Казахстан (772)734-952-31

Пермь (342)205-81-47
 Ростов-на-Дону (863)308-18-15
 Рязань (4912)46-61-64
 Самара (846)206-03-16
 Санкт-Петербург (812)309-46-40
 Саратов (845)249-38-78
 Севастополь (8692)22-31-93
 Симферополь (3652)67-13-56
 Смоленск (4812)29-41-54
 Сочи (862)225-72-31
 Ставрополь (8652)20-65-13
 Таджикистан (992)427-82-92-69

Сургут (3462)77-98-35
 Тверь (4822)63-31-35
 Томск (3822)98-41-53
 Тула (4872)74-02-29
 Тюмень (3452)66-21-18
 Ульяновск (8422)24-23-59
 Уфа (347)229-48-12
 Хабаровск (4212)92-98-04
 Челябинск (351)202-03-61
 Череповец (8202)49-02-64
 Ярославль (4852)69-52-93