

LEGENDA
KEY
LEGENDE
LEGENDE
LEYENDA
LEGENDA



Regolazione a cacciavite - Screwdriver regulation - Einstellbar mit schraubenzieher
A vis noyée - Regulación a destornillador - Regulagem por parafuso



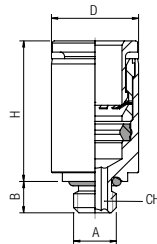
Regolazione manuale - Manual regulation - Einstellbar von hand
Réglage manuel - Regulación manual - Regulagem manual

56010

New

RACCORDO DIRITTO MASCHIO CILINDRICO ESAGONO INCASSATO
STRAIGHT MALE ADAPTOR (PARALLEL) WITH EXAGON EMBEDDED
GERADE EINSCHRAUBVERSCHRAUBUNG MIT INNENSECHSKANT ZYLINDRISCH
RACCORD DROIT MÂLE, CYLINDRIQUE, 6-PANS INTERIEUR
RACOR RECTO MACHO CILÍNDRICO CON TÓRICA HEXÁGONO INTERIOR
CONEXÃO RETA COM SEXTAVADO INTERNO E ROSCA MÉTRICA

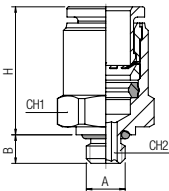
| Code | Tube | A | B | H | D | CH | Pack. |
|--------------|------|----|-----|----|-----|-----|-------|
| 56010 00 006 | 4 | M3 | 3 | 15 | 8 | 1.5 | 10 |
| 56010 00 001 | 4 | M5 | 3.6 | 14 | 8.5 | 2.5 | 10 |
| 56010 00 002 | 4 | M7 | 5 | 14 | 10 | 3 | 10 |
| 56010 00 003 | 6 | M5 | 3.6 | 16 | 10 | 2.5 | 10 |
| 56010 00 004 | 6 | M7 | 5 | 16 | 10 | 4 | 10 |



56020

RACCORDO DIRITTO MASCHIO CILINDRICO
STRAIGHT MALE ADAPTOR (PARALLEL)
GERADE EINSCHRAUBVERSCHRAUBUNG ZYLINDRISCH
RACCORD DROIT MÂLE, CYLINDRIQUE
RACOR RECTO MACHO CILÍNDRICO CON TÓRICA
CONEXÃO RETA COM ROSCA PARALELA

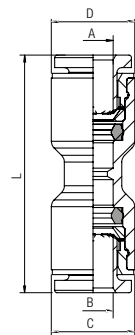
| Code | Tube | A | B | H | CH1 | CH2 | Pack. |
|--------------|------|-----|-----|------|-----|-----|-------|
| 56020 00 001 | 2 | M3 | 3 | 11 | 6 | 1.5 | 10 |
| 56020 00 002 | 2 | M5 | 4 | 9 | 7 | 1.5 | 10 |
| 56020 00 003 | 3 | M3 | 3 | 11 | 6 | 1.5 | 10 |
| 56020 00 004 | 3 | M5 | 4 | 10 | 7 | 2 | 10 |
| 56020 00 005 | 4 | M3 | 3 | 14.5 | 8 | / | 10 |
| 56020 00 006 | 4 | M5 | 3.6 | 14 | 9 | 2.5 | 10 |
| 56020 00 007 | 4 | M7 | 5 | 14 | 10 | 3 | 10 |
| 56020 00 008 | 4 | 1/8 | 5 | 11.5 | 13 | 3 | 10 |
| 56020 00 009 | 6 | M5 | 3.6 | 16 | 11 | 2.5 | 10 |
| 56020 00 010 | 6 | M7 | 5 | 16 | 10 | 3 | 10 |
| 56020 00 011 | 6 | 1/8 | 5 | 13.5 | 13 | 4 | 10 |
| 56020 00 012 | 6 | 1/4 | 7.1 | 12 | 16 | 4 | 10 |



56040

RACCORDO DIRITTO INTERMEDIO
STRAIGHT CONNECTOR
VERBINDUNGSVERSCHRAUBUNG
RACCORD UNION DOUBLE
RACOR RECTO INTERMEDIO
CONEXÃO RETA TUBO-TUBO

| Code | A | B | C | D | L | Pack. |
|--------------|---|---|------|------|------|-------|
| 56040 00 003 | 4 | 4 | 8.5 | 8.5 | 25 | 10 |
| 56040 00 004 | 6 | 6 | 10.5 | 10.5 | 28 | 10 |
| 56040 00 005 | 8 | 6 | 10.5 | 14 | 34.5 | 10 |



Архангельск (8182)63-90-72
Астана (7172)727-132
Астрахань (8512)99-46-04
Барнаул (3852)73-04-60
Белгород (4722)40-23-64
Брянск (4832)59-03-52
Владивосток (423)249-28-31
Волгоград (844)278-03-48
Вологда (8172)26-41-59
Воронеж (473)204-51-73
Екатеринбург (343)384-55-89
Иваново (4932)77-34-06

Ижевск (3412)26-03-58
Иркутск (395)279-98-46
Казань (843)206-01-48
Калининград (4012)72-03-81
Калуга (4842)92-23-67
Кемерово (3842)65-04-62
Киров (8332)68-02-04
Краснодар (861)203-40-90
Красноярск (391)204-63-61
Курск (4712)77-13-04
Липецк (4742)52-20-81
Киргизия (996)312-96-26-47

Магнитогорск (3519)55-03-13
Москва (495)268-04-70
Мурманск (8152)59-64-93
Набережные Челны (8552)20-53-41
Нижегород (831)429-08-12
Новокузнецк (3843)20-46-81
Новосибирск (383)227-86-73
Омск (3812)21-46-40
Орел (4862)44-53-42
Оренбург (3532)37-68-04
Пенза (8412)22-31-16
Казахстан (772)734-952-31

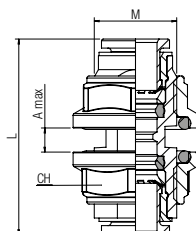
Пермь (342)205-81-47
Ростов-на-Дону (863)308-18-15
Рязань (4912)46-61-64
Самара (846)206-03-16
Санкт-Петербург (812)309-46-40
Саратов (845)249-38-78
Северодвинск (8692)22-31-93
Симферополь (3652)67-13-56
Смоленск (4812)29-41-54
Сочи (862)225-72-31
Ставрополь (8652)20-65-13
Таджикистан (992)427-82-92-69

Сургут (3462)77-98-35
Тверь (4822)63-31-35
Томск (3822)98-41-53
Тула (4872)74-02-29
Тюмень (3452)66-21-18
Ульяновск (8422)24-23-59
Уфа (347)229-48-12
Хабаровск (4212)92-98-04
Челябинск (351)202-03-61
Череповец (8202)49-02-64
Ярославль (4852)69-52-93

56050

RACCORDO DIRITTO INTERMEDIO DI ATTRAVERSAMENTO

BULKHEAD CONNECTOR
 SCHOTTVERSCHRAUBUNG
 RACCORD TRAVERSÉE DE CLOISON
 RACOR RECTO INTERMEDIO PASATABIQUES
 CONEXÃO PASSA-MURO RETA TUBO-TUBO



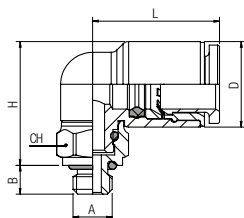
| Code | Tube | M | L | CH | A max | Pack. |
|--------------|------|-------|----|----|-------|-------|
| 56050 00 003 | 4 | M10x1 | 25 | 13 | 5.5 | 10 |
| 56050 00 004 | 6 | M12x1 | 28 | 15 | 8.5 | 10 |

56115

New

RACCORDO A L ORIENTABILE MASCHIO CILINDRICO

ORIENTING ELBOW MALE ADAPTOR (PARALLEL)
 WINKELVERSCHRAUBUNG ZYLINDRISCH (DREHBAR)
 EQUERRE MÂLE ORIENTABLE, CYLINDRIQUE
 RACOR A L ORIENTABLE MACHO CILÍNDRICO
 CONEXÃO MACHO EM "L" ORIENTÁVEL COM ROSCA PARALELA

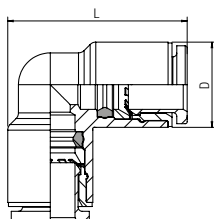


| Code | Tube | A | B | H | L | D | CH | Pack. |
|--------------|------|------|-----|------|----|------|----|-------|
| 56115 00 001 | 2 | M3 | 3 | 13 | 11 | 6.5 | 8 | 10 |
| 56115 00 002 | 2 | M5 | 4 | 12.5 | 11 | 6.5 | 8 | 10 |
| 56115 00 003 | 3 | M3 | 3 | 13 | 11 | 6.5 | 8 | 10 |
| 56115 00 004 | 3 | M5 | 4 | 12.5 | 11 | 6.5 | 8 | 10 |
| 56115 00 013 | 4 | M3 | 3 | 10 | 14 | 8.5 | 8 | 10 |
| 56115 00 005 | 4 | M5 | 3.6 | 13.5 | 14 | 8.5 | 8 | 10 |
| 56115 00 006 | 4 | 1/8 | 5 | 13 | 14 | 8.5 | 13 | 10 |
| 56115 00 007 | 4 | 1/4 | 7.1 | 13 | 14 | 8.5 | 16 | 10 |
| 56115 00 008 | 6 | M5 | 3.6 | 15.5 | 16 | 10.5 | 8 | 10 |
| 56115 00 011 | 6 | M7x1 | 5 | 16 | 16 | 10.5 | 9 | 10 |
| 56115 00 009 | 6 | 1/8 | 5 | 15 | 16 | 10.5 | 13 | 10 |
| 56115 00 010 | 6 | 1/4 | 7.1 | 15 | 16 | 10.5 | 16 | 10 |

56130

RACCORDO A L INTERMEDIO

EQUAL ELBOW
 WINKELVERSCHRAUBUNG
 RACCORD EQUERRE
 RACOR A L INTERMEDIO
 CONEXÃO EM "L" TUBO-TUBO



| Code | Tube | L | D | Pack. |
|--------------|------|------|------|-------|
| 56130 00 001 | 2 | 14.5 | 6.5 | 10 |
| 56130 00 002 | 3 | 14.5 | 6.5 | 10 |
| 56130 00 003 | 4 | 19 | 8.5 | 10 |
| 56130 00 004 | 6 | 22.5 | 10.5 | 10 |

56215

RACCORDO A T ORIENTABILE MASCHIO CILINDRICO

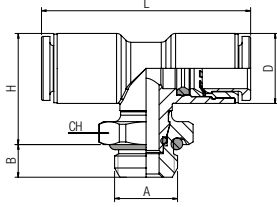
ORIENTING TEE MALE ADAPTOR (PARALLEL) – CENTRE LEG

T-EINSCHRAUBVERSCHRAUBUNG ZYLINDRISCH (DREHBAR)

TÉ ORIENTABLE À PIQUAGE MÂLE CENTRAL, CYLINDRIQUE

RACOR A T ORIENTABLE MACHO CENTRAL CILÍNDRICO

CONEXÃO MACHO EM "T" ORIENTÁVEL COM ROSCA PARALELA



| Code | Tube | A | B | H | L | D | CH | Pack. |
|--------------|------|----|---|------|----|-----|----|-------|
| 56215 00 001 | 2 | M3 | 3 | 13 | 22 | 6.5 | 8 | 10 |
| 56215 00 002 | 2 | M5 | 4 | 12.5 | 22 | 6.5 | 8 | 10 |
| 56215 00 003 | 3 | M3 | 3 | 13 | 22 | 6.5 | 8 | 10 |
| 56215 00 004 | 3 | M5 | 4 | 12.5 | 22 | 6.5 | 8 | 10 |

56225

RACCORDO A T ORIENTABILE MASCHIO LATERALE CILINDRICO

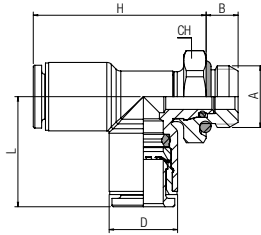
ORIENTING TEE MALE ADAPTOR (PARALLEL) – OFF-SET LEG

L-EINSCHRAUBVERSCHRAUBUNG ZYLINDRISCH (DREHBAR)

TÉ ORIENTABLE À PIQUAGE LATÉRAL, CYLINDRIQUE

RACOR A T ORIENTABLE MACHO LATERAL CILÍNDRICO

CONEXÃO MACHO EM "T" LATERAL ORIENTÁVEL COM ROSCA PARALELA



| Code | Tube | A | B | H | L | D | CH | Pack. |
|--------------|------|----|---|----|----|-----|----|-------|
| 56225 00 001 | 2 | M3 | 3 | 21 | 11 | 6.5 | 8 | 10 |
| 56225 00 002 | 2 | M5 | 4 | 21 | 11 | 6.5 | 8 | 10 |
| 56225 00 003 | 3 | M3 | 3 | 21 | 11 | 6.5 | 8 | 10 |
| 56225 00 004 | 3 | M5 | 4 | 21 | 11 | 6.5 | 8 | 10 |

56230

RACCORDO A T INTERMEDIO

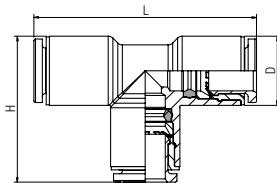
TEE CONNECTOR

T-ANSCHLUSS

RACCORD TÈ

RACOR A T INTERMEDIO

CONEXÃO EM "T" TUBO-TUBO



| Code | Tube | H | L | D | Pack. |
|--------------|------|------|------|------|-------|
| 56230 00 001 | 2 | 14.5 | 22 | 6.5 | 10 |
| 56230 00 002 | 3 | 14.5 | 22 | 6.5 | 10 |
| 56230 00 003 | 4 | 19 | 29 | 8.5 | 10 |
| 56230 00 004 | 6 | 22.5 | 34.5 | 10.5 | 10 |

56550

RACCORDO ORIENTABILE A L

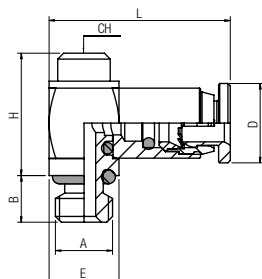
ORIENTING SINGLE BANJO BODY MALE

WINKELSCHWENKVERSCHRAUBUNG (DREHBAR)

EQUERRE MÂLE BANJO, ORIENTABLE

RACOR ORIENTABLE SIMPLE

CONEXÃO BANJO EM "L"



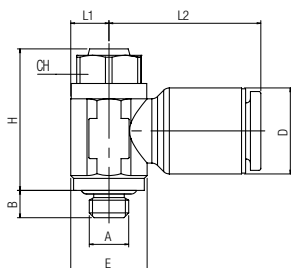
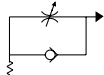
| Code | Tube | A | B | H | L | E | D | CH | Pack. |
|--------------|------|----|---|------|------|---|---|----|-------|
| 56550 00 003 | 3 | M3 | 3 | 10.5 | 15.5 | 6 | 7 | 2 | 10 |
| 56550 00 004 | 3 | M5 | 4 | 10.5 | 15.5 | 6 | 7 | 2 | 10 |

56900



REGOLATORE UNIDIREZIONALE ORIENTABILE PER CILINDRO FILETTO CILINDRICO

ORIENTING FLOW REGULATOR FOR CYLINDER (PARALLEL)
 DURCHFLUSSREGLER ABLUFTDROSSELUNG (DREHBAR) MIT ZYL. GEWINDE
 RÉGLEUR A L'ÉCHAPPEMENT FILETAGE CYLINDRIQUE
 REGULADOR UNIDIRECCIONAL ORIENTABLE PARA CILINDRO ROSCA CILÍNDRICA
 REGULADORA PARA CILINDRO UNIDIRECCIONAL ORIENTÁVEL COM ROSCA PARALELA



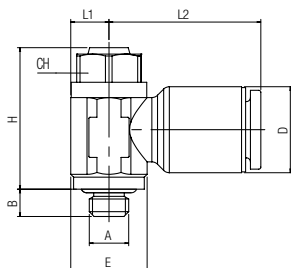
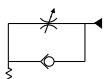
| Code | Tube | A | B | H | E | L1 | L2 | D | CH | Pack. |
|--------------|------|----|-----|----|-----|-----|------|------|----|-------|
| 56900 00 001 | 4 | M5 | 3.6 | 18 | 9.5 | 4.5 | 16.5 | 8.5 | 8 | 10 |
| 56900 00 002 | 6 | M5 | 3.6 | 18 | 9.5 | 4.5 | 19 | 10.5 | 8 | 10 |

56910



REGOLATORE UNIDIREZIONALE ORIENTABILE PER VALVOLA FILETTO CILINDRICO

ORIENTING FLOW REGULATOR FOR VALVE (PARALLEL)
 DURCHFLUSSREGLER ZULUFTDROSSELUNG (DREHBAR) MIT ZYL. GEWINDE
 RÉGLEUR A L'ADMISSION FILETAGE CYLINDRIQUE
 REGULADOR UNIDIRECCIONAL ORIENTABLE PARA VÁLVULA ROSCA CILÍNDRICA
 REGULADORA PARA VÁLVULA UNIDIRECCIONAL ORIENTÁVEL COM ROSCA PARALELA



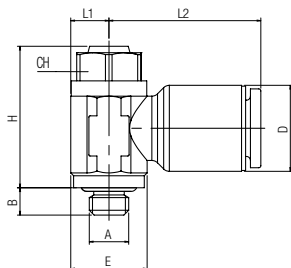
| Code | Tube | A | B | H | E | L1 | L2 | D | CH | Pack. |
|--------------|------|----|-----|----|-----|-----|------|------|----|-------|
| 56910 00 001 | 4 | M5 | 3.6 | 18 | 9.5 | 4.5 | 16.5 | 8.5 | 8 | 10 |
| 56910 00 002 | 6 | M5 | 3.6 | 18 | 9.5 | 4.5 | 19 | 10.5 | 8 | 10 |

56920



REGOLATORE BIDIREZIONALE ORIENTABILE FILETTO CILINDRICO

ORIENTING BI-DIRECTIONAL FLOW REGULATOR (PARALLEL)
 DURCHFLUSSREGLER BI-DIREKTIONAL (DREHBAR) MIT ZYL. GEWINDE
 RÉGLEUR BI-DIRECTIONNEL FILETAGE CYLINDRIQUE
 REGULADOR BIDIRECCIONAL ORIENTABLE ROSCA CILÍNDRICA
 REGULADORA BI-DIRECCIONAL ORIENTÁVEL COM ROSCA PARALELA



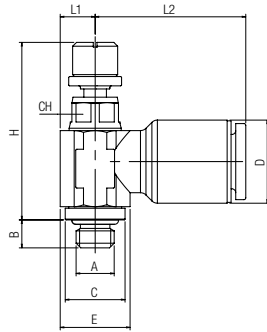
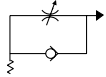
| Code | Tube | A | B | H | E | L1 | L2 | D | CH | Pack. |
|--------------|------|----|-----|----|-----|-----|------|------|----|-------|
| 56920 00 001 | 4 | M5 | 3.6 | 18 | 9.5 | 4.5 | 16.5 | 8.5 | 8 | 10 |
| 56920 00 002 | 6 | M5 | 3.6 | 18 | 9.5 | 4.5 | 19 | 10.5 | 8 | 10 |

56935



REGOLATORE UNIDIREZIONALE ORIENTABILE PER CILINDRO FILETTO CILINDRICO

ORIENTING FLOW REGULATOR FOR CYLINDER (PARALLEL)
DURCHFLOSSREGLER ABLUFTDROSSELUNG (DREHBAR) MIT ZYL. GEWINDE
RÉGLEUR A L'ÉCHAPPEMENT FILETAGE CYLINDRIQUE
REGULADOR UNIDIRECCIONAL ORIENTABLE PARA CILINDRO ROSCA CILÍNDRICA
REGULADORA PARA CILINDRO UNIDIRECCIONAL ORIENTÁVEL COM ROSCA PARALELA



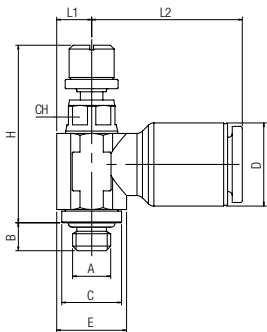
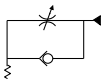
| Code | Tube | A | B | H | E | C | L1 | L2 | D | CH | Pack. |
|--------------|------|-----|-----|-----------|------|------|-----|------|------|----|-------|
| 56935 00 006 | 4 | M3 | 3 | 21.5÷24.5 | 9 | 7.5 | 4.5 | 17 | 8.5 | 6 | 10 |
| 56935 00 001 | 4 | M5 | 3.6 | 21.5÷24.5 | 9 | 7.5 | 4.5 | 17 | 8.5 | 6 | 10 |
| 56935 00 003 | 4 | 1/8 | 5 | 24÷27.5 | 11.5 | 13.5 | 6.5 | 17 | 8.5 | 7 | 10 |
| 56935 00 002 | 6 | M5 | 3.6 | 21.5÷24.5 | 9 | 7.5 | 4.5 | 19.5 | 10.5 | 6 | 10 |
| 56935 00 004 | 6 | 1/8 | 5 | 24÷27.5 | 11.5 | 13.5 | 6.5 | 19.5 | 10.5 | 7 | 10 |

56945



REGOLATORE UNIDIREZIONALE ORIENTABILE PER VALVOLA FILETTO CILINDRICO

ORIENTING FLOW REGULATOR FOR VALVE (PARALLEL)
DURCHFLOSSREGLER ZULUFTDROSSELUNG (DREHBAR) MIT ZYL. GEWINDE
RÉGLEUR A L'ADMISSION FILETAGE CYLINDRIQUE
REGULADOR UNIDIRECCIONAL ORIENTABLE PARA VÁLVULA ROSCA CILÍNDRICA
REGULADORA PARA VÁLVULA UNIDIRECCIONAL ORIENTÁVEL COM ROSCA PARALELA



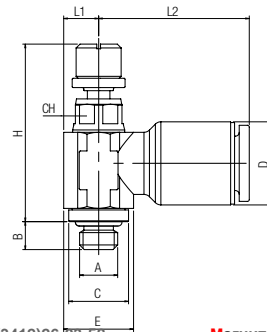
| Code | Tube | A | B | H | E | C | L1 | L2 | D | CH | Pack. |
|--------------|------|-----|-----|-----------|------|------|-----|------|------|----|-------|
| 56945 00 001 | 4 | M5 | 3.6 | 21.5÷24.5 | 9 | 7.5 | 4.5 | 17 | 8.5 | 6 | 10 |
| 56945 00 003 | 4 | 1/8 | 5 | 24÷27.5 | 11.5 | 13.5 | 6.5 | 17 | 8.5 | 7 | 10 |
| 56945 00 002 | 6 | M5 | 3.6 | 21.5÷24.5 | 9 | 7.5 | 4.5 | 19.5 | 10.5 | 6 | 10 |
| 56945 00 004 | 6 | 1/8 | 5 | 24÷27.5 | 11.5 | 13.5 | 6.5 | 19.5 | 10.5 | 7 | 10 |

56955



REGOLATORE BIDIREZIONALE ORIENTABILE FILETTO CILINDRICO

ORIENTING BI-DIRECTIONAL FLOW REGULATOR (PARALLEL)
DURCHFLOSSREGLER BI-DIREKTIONAL (DREHBAR) MIT ZYL. GEWINDE
RÉGLEUR BI-DIRECTIONNEL FILETAGE CYLINDRIQUE
REGULADOR BIDIRECCIONAL ORIENTABLE ROSCA CILÍNDRICA
REGULADORA BI-DIRECCIONAL ORIENTÁVEL COM ROSCA PARALELA



| Code | Tube | A | B | H | E | C | L1 | L2 | D | CH | Pack. |
|--------------|------|-----|-----|-----------|------|------|-----|------|------|----|-------|
| 56955 00 001 | 4 | M5 | 3.6 | 21.5÷24.5 | 9 | 7.5 | 4.5 | 17 | 8.5 | 6 | 10 |
| 56955 00 003 | 4 | 1/8 | 5 | 24÷27.5 | 11.5 | 13.5 | 6.5 | 17 | 8.5 | 7 | 10 |
| 56955 00 002 | 6 | M5 | 3.6 | 21.5÷24.5 | 9 | 7.5 | 4.5 | 19.5 | 10.5 | 6 | 10 |
| 56955 00 004 | 6 | 1/8 | 5 | 24÷27.5 | 11.5 | 13.5 | 6.5 | 19.5 | 10.5 | 7 | 10 |

Архангельск (8182)63-90-72
Астана (7172)727-132
Астрахань (8512)99-46-04
Барнаул (3852)73-04-60
Белгород (4722)40-23-64
Брянск (4832)59-03-52
Владивосток (423)249-28-31
Волгоград (844)278-03-48
Вологда (8172)26-41-59
Воронеж (473)204-51-73
Екатеринбург (343)384-55-89
Иваново (4932)77-34-06

Ижевск (3412)26-03-58
Иркутск (395)279-98-46
Казань (843)206-01-48
Калининград (4012)72-03-81
Калуга (4842)92-23-67
Кемерово (3842)65-04-62
Киров (8332)68-02-04
Краснодар (861)203-40-90
Красноярск (391)204-63-61
Курск (4712)77-13-04
Липецк (4742)52-20-81
Киргизия (996)312-96-26-47

Магнитогорск (3519)55-03-13
Москва (495)268-04-70
Мурманск (8152)59-64-93
Набережные Челны (8552)20-53-41
Нижегород (831)429-08-12
Новокузнецк (3843)20-46-81
Новосибирск (383)227-86-73
Омск (3812)21-46-40
Орел (4862)44-53-42
Оренбург (3532)37-68-04
Пенза (8412)22-31-16
Казахстан (772)734-952-31

Пермь (342)205-81-47
Ростов-на-Дону (863)308-18-15
Рязань (4912)46-61-64
Самара (846)206-03-16
Санкт-Петербург (812)309-46-40
Саратов (845)249-38-78
Севастополь (8692)22-31-93
Симферополь (3652)67-13-56
Смоленск (4812)29-41-54
Сочи (862)225-72-31
Ставрополь (8652)20-65-13
Таджикистан (992)427-82-92-69

Сургут (3462)77-98-35
Тверь (4822)63-31-35
Рязань (4912)46-61-64
Томск (3822)98-41-53
Тула (4872)74-02-29
Тюмень (3452)66-21-18
Ульяновск (8422)24-23-59
Уфа (347)229-48-12
Хабаровск (4212)92-98-04
Челябинск (351)202-03-61
Череповец (8202)49-02-64
Ярославль (4852)69-52-93