

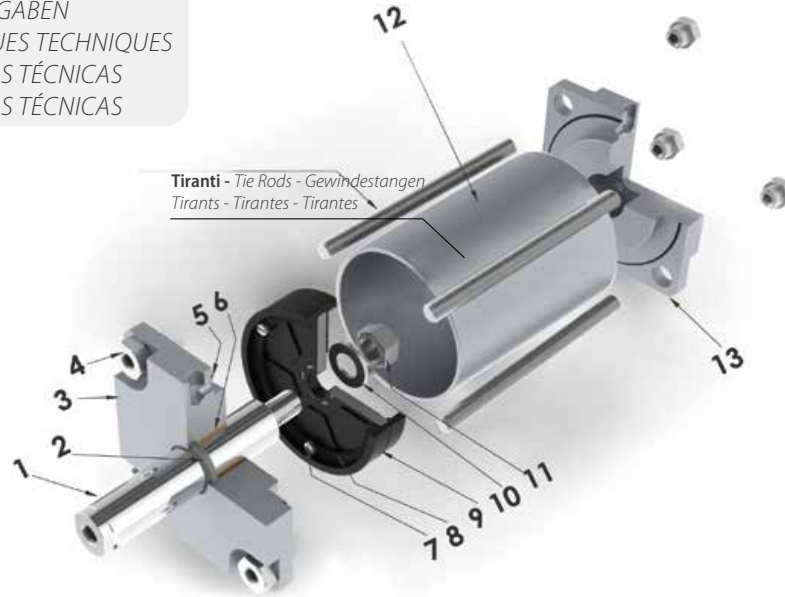
SERIE P - CILINDRI COMPATTI ISO 15552



COMPACT CYLINDERS ISO 15552
 KOMPAKTZYLINDER ISO 15552
 VÉRINS COMPACTS ISO 15552
 CILINDROS COMPACTOS ISO 15552
 CILINDROS COMPACTOS ISO 15552



CARATTERISTICHE TECNICHE
 TECHNICAL CHARACTERISTICS
 TECHNISCHE ANGABEN
 CARACTÉRISTIQUES TECHNIQUES
 CARACTERÍSTICAS TÉCNICAS
 CARACTERÍSTICAS TÉCNICAS



Materiali e Componenti	IT	Component Parts and Materials	GB	Komponenten und Materialien	DE
1 Stelo in Acciaio cromato o Acciaio inox		1 Rod Chromium plated steel or Stainless steel		1 Kolbenstange Stahl verchromt oder Edelstahl	
2 Guarnizione stelo in Poliuretano		2 Rod seal in Polyurethane		2 Kolbenstangendichtung aus Polyurethan	
3 Testata anteriore in Alluminio Anodizzato		3 Front head In anodized aluminium		3 Zylinderkopf Aluminium eloxiert	
4 Vite di fissaggio in Acciaio zincato		4 Fixing screw Galvanized steel		4 Flanschschrauben Stahl verzinkt	
5 O-ring in NBR		5 O-ring in NBR		5 O-Ring Dichtung aus NBR	
6 Bronzina in Bronzo sinterizzato		6 Bush in Sintered bronze		6 Gleitlager Sinterbronze	
7 Vite di fissaggio in Acciaio zincato		7 Fixing screw Galvanized steel		7 Schrauben Stahl verzinkt	
8 Magnete in Plastroferrite		8 Magnet Bonded ferrite		8 Magnetring Plastroferrit	
9 Pistone NBR (Ø250 Pistone in Alluminio e poliuretano)		9 NBR Piston (Ø250 Aluminium and poliurethane)		9 Kolben aus NBR (Ø250 Kolben aus Aluminium und Polyurethan)	
10 Rondella in acciaio zincato		10 Washer Galvanized steel		10 Scheibe aus Stahl verzinkt	
11 Dado in Acciaio zincato		11 Nut Galvanized steel		11 Mutter aus Stahl verzinkt	
12 Tubo in Alluminio anodizzato		12 Tube Anodized aluminium		12 Zylinderrohr Aluminium eloxiert	
13 Testata posteriore in Alluminio Anodizzato		13 Rear head In anodized aluminium		13 Zylinderdeckel Aluminium eloxiert	

Matériaux et Composants	FR	Materiales y componentes	ES	Materiais e Componentes	PT
1 Tige en acier chromé ou acier inoxydable		1 Vástago en Acero cromado o Acero inox		1 Haste em Aço Cromado ou Aço inox	
2 Joint de tige en polyuréthane		2 Junta vástago en Poliuretano		2 Vedação da Haste em Poliuretano	
3 Flasque en aluminium anodisé		3 Tapa anterior en Aluminio Anodizado		3 Cabeçote frontal em alumínio anodizado	
4 Vis en acier galvanisé		4 Tornillos de fijación en Acero zincado		4 Parafusos de fixação em Aço Zincado	
5 Joint torique en NBR		5 Junta tórica en NBR		5 O-ring em NBR	
6 Palier en bronze fritté		6 Cojinete en Bronce sinterizado		6 Bucha do cabeçote em bronze sinterizado	
7 Vis en acier galvanisé		7 Tornillos de fijación en Acero zincado		7 Parafusos de fixação em Aço Zincado	
8 Aimants en plastroferrite		8 Magnete in Plastroferrite		8 Imã em plastroferrite	
9 Piston en NBR (Ø250 Aluminium et poliuréthane)		9 Pistón NBR (Ø250 Pistón en Aluminio e poliuretano)		9 Êmbolo NBR (Ø250 Êmbolo em alumínio e poliuretano)	
10 Rondelle en acier galvanisé		10 Arandela en acero zincado		10 Arruela em Aço Zincado	
11 Ecrou en acier galvanisé		11 Tuerca en Acero zincado		11 Porca em aço zincado	
12 Tube en aluminium anodisé		12 Camisa en Aluminio anodizado		12 Camisa em Alumínio anodizado	
13 Flasque en aluminium anodisé		13 Tapa posterior en Aluminio Anodizado		13 Cabeçote traseiro em alumínio anodizado	

Архангельск (8182)63-90-72
 Астана (7172)727-132
 Астрахань (8512)99-46-04
 Барнаул (3852)73-04-60
 Белгород (4722)40-23-64
 Брянск (4832)59-03-52
 Владивосток (423)249-28-31
 Волгоград (844)278-03-48
 Вологда (8172)26-41-59
 Воронеж (473)204-51-73
 Екатеринбург (343)384-55-89
 Иваново (4932)77-34-06

Ижевск (3412)26-03-58
 Иркутск (395)279-98-46
 Казань (843)206-01-48
 Калининград (4012)72-03-81
 Калуга (4842)92-23-67
 Кемерово (3842)65-04-62
 Киров (8332)68-02-04
 Краснодар (861)203-40-90
 Красноярск (391)204-63-61
 Курск (4712)77-13-04
 Липецк (4742)52-20-81
 Киргизия (996)312-96-26-47

Магнитогорск (3519)55-03-13
 Москва (495)268-04-70
 Мурманск (8152)59-64-93
 Набережные Челны (8552)20-53-41
 Нижний Новгород (831)429-08-12
 Новокузнецк (3843)20-46-81
 Новосибирск (383)227-86-73
 Омск (3812)21-46-40
 Орел (4862)44-53-42
 Оренбург (3532)37-68-04
 Пенза (8412)22-31-16
 Казахстан (772)734-952-31

Пермь (342)205-81-47
 Ростов-на-Дону (863)308-18-15
 Рязань (4912)46-61-64
 Самара (846)206-03-16
 Санкт-Петербург (812)309-46-40
 Саратов (845)249-38-78
 Севастополь (8692)22-31-93
 Симферополь (3652)67-13-56
 Смоленск (4812)29-41-54
 Сочи (862)225-72-31
 Ставрополь (8652)20-65-13
 Таджикистан (992)427-82-92-69

Сургут (3462)77-98-35
 Тверь (4822)63-31-35
 Томск (3822)98-41-53
 Тула (4872)74-02-29
 Тюмень (3452)66-21-18
 Ульяновск (8422)24-23-59
 Уфа (347)229-48-12
 Хабаровск (4212)92-98-04
 Челябинск (351)202-03-61
 Череповец (8202)49-02-64
 Ярославль (4852)69-52-93



Norma di Riferimento

Reference standard

Entspricht der Norm

Norme de référence

Normativa de referencia

Norma de referência

1907/2006

REACH ✓

2011/65/CE

RoHS ✓

SILICON
FREE

II 2GD Ex h IIC T6

Ex



Pressioni

Pressures

Druckbereich

Pressions

Presiones

Pressões

1 bar (0.1 MPa)

10 bar (1 MPa)



Temperature

Temperatures

Temperatur

Températures

Temperaturas

Temperaturas

0 °C (-20 °C con aria secca)

(-20 °C with dry air)

(-20 °C mit trockener Luft)

(-20 °C avec air sec)

(-20 °C con aire seco)

(-20 °C com ar seco)

+ 80 °C



Fluidi compatibili

Aria compressa filtrata lubrificata e non lubrificata.

Fluids

Filtered and lubricated compressed air as well as non lubricated air.

Geeignete Medien

Filtered and lubricated compressed air as well as non lubricated air.

Fluides compatibles

Air comprimé filtré, lubrifié ou non lubrifié.

Fluidos compatibles

Aire comprimido filtrado lubricado y no lubricado.

Fluidos compatíveis

Ar comprimido filtrado e lubrificado ou não lubrificado.



Funzionamento

Doppio effetto magnetico.
Stelo singolo o passante.

Functioning

Double-acting magnetic.
Single or through piston rod.

Funktion

Doppeltwirkend Magnetisch.
Durchgehender Kolben

Exécutions

Duble effet Magnétique.
Tige simple outraversante.

Funcionamiento

Doble efecto magnético.
Vástago simple o pasante.

Funcionamento

Dupla Ação Magnético.
Haste Simples e Passante.



Alesaggi

Bores

Durchmesser

Diamètres

Diámetros

Diâmetros

125 - 160 - 200 - 250 mm



Corse Standard

Standard Strokes

Standardhub

Courses standards

Carreras Standard

Cursos Padrão

from 5 to 1000 mm



Sensori consigliati

Sensors recommended

Empfohlene Sensoren

Capteurs recommandés

Sensores recomendados

Sensores aconselhados

DSL

DSH

DT

FORZE E CONSUMI
FORCES AND CONSUMPTIONS
KRÄFTE UND LUFTVERBRAUCH
FORCES ET CONSOMMATIONS D'AIR
FUERZAS Y CONSUMOS
FORÇAS E CONSUMOS

Vedi pag. 19.64 - 19.65
 See page 19.64 - 19.65
 Siehe Seite 19.64 - 19.65
 Voir pag. 19.64 - 19.65
 Ver pág. 19.64 - 19.65
 Ver pág. 19.64 - 19.65



Tabella dei codici di ordinazione

- Ordering codes
- Bestellschlüssel
- Code de commande
- Tabla de codificación para pedidos
- Tabela de codificação para compra

SERIE	Versione Version Ausführung Version Version Versão	Ø mm	Corsa Stroke Hub Course Carrera Curso mm	Profilo Profile Rohr Tube Perfil Perfil	Varianti Choices Varianten Options Variantes Variações
-------	---	---------	--	--	---

P F **1 2 5** **0 0 2 5** **T** **I S**

- ▲ **PF** Doppio Effetto Magnetico
 Double Acting Magnetic
 Doppeltwirkend
 Magnetisch
 Double Effet Magnétique
 Doble Efecto magnético
 Dupla Ação Magnético
- ◆ **PJ** Doppio Effetto Stelo
 Passante Magnetico
 Double Acting Magnetic
 With Double Rod End
 Doppeltwirkend
 Durchgehender Kolben
 Magnetisch
 Double Effet Tige
 Traversante Magnétique
 Doble Efecto Vástago
 pasante Magnético
 Dupla Ação Haste
 Passante Magnético

- = Standard Stelo femmina
 Standard female rod
 Standard: Kolbenstange mit IG
 Standard: tige avec taraudage
 Standard Vástago hembra
 Standard haste fêmea
- M** = Stelo Maschio
 Male rod
 Aussengewinde
 Filetage mâle
 Vástago macho
 Haste macho

- 125
- 160
- 200
- 250
- 0005
- 0010
- 0015
- 0020
- 0025
- 0030
- 0040
- 0050
- 0060
- 0080
- 0100
- 0125
- 0150
- 0200
- 0250
- 0300
- 0320
- 0350
- 0400
- 0450
- 0500
- 0600
- 0700
- 0800
- 0900
- 1000

- T** Camicia in alluminio
 profilo tondo con tiranti
 Anodized aluminium tube
 round profile with tie rods
 Aluminiumrohr mit
 Aluminiumstangenbefestigung
 Tube en aluminium avec
 tirants de fixations
 Camisa aluminio perfil
 redondo con tirantes.
 Camisa em alumínio de perfil
 redondo.

- IS** Stelo inox
 Stainless steel rod
 Stange Edelstahl
 Tige en acier inoxydable
 Vástago inox
 Haste em Inox

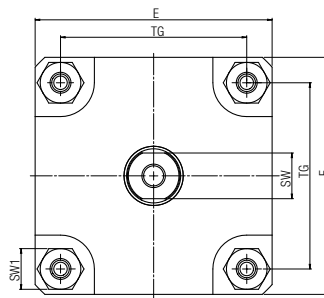
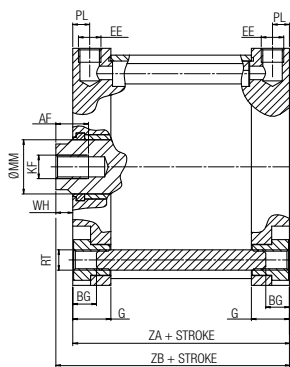
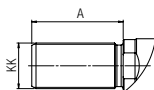
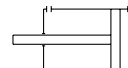
A richiesta corse intermedie o superiori.
 Intermediate or higher strokes are available upon request.
 Auf Anfrage Zwischenhübe.
 Autres courses sur demande.
 Bajo demanda carreras intermedias o superiores.
 Cursos intermediários ou superiores sob encomenda.

Ø mm	Corse - Strokes - Hub - Courses - Carreras - Cursos mm																										
	5	10	15	20	25	30	40	50	60	80	100	125	150	200	250	300	320	350	400	450	500	600	700	800	900	1000	
125	▲	▲	▲	▲	▲	▲	▲	▲	▲	▲	▲	▲	▲	▲	▲	▲	▲	▲	▲	▲	▲	▲	▲	▲	▲	▲	▲
160	▲	▲	▲	▲	▲	▲	▲	▲	▲	▲	▲	▲	▲	▲	▲	▲	▲	▲	▲	▲	▲	▲	▲	▲	▲	▲	▲
200	▲	▲	▲	▲	▲	▲	▲	▲	▲	▲	▲	▲	▲	▲	▲	▲	▲	▲	▲	▲	▲	▲	▲	▲	▲	▲	▲
250	▲	▲	▲	▲	▲	▲	▲	▲	▲	▲	▲	▲	▲	▲	▲	▲	▲	▲	▲	▲	▲	▲	▲	▲	▲	▲	▲

PF

DOPPIO EFFETTO MAGNETICO

DOUBLE ACTING MAGNETIC
DOPPELTWIRKEND MAGNETISCH
DOUBLE EFFET MAGNÉTIQUE
DOBLE EFECTO MAGNÉTICO
DUPLA AÇÃO MAGNÉTICO

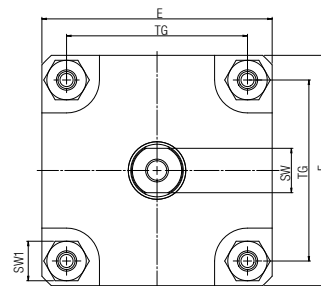
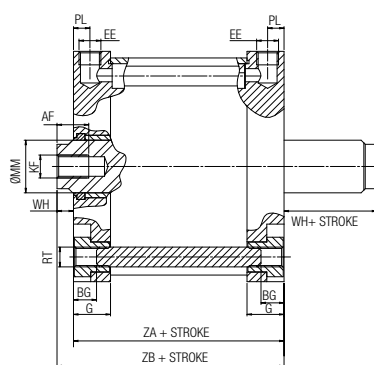
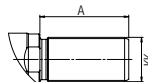
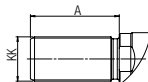
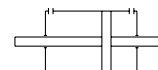


∅	A	E	G	TG	AF	BG	EE	KF	KK	MM	PL	RT	SW	WH	ZA	ZB	SW1
125	54	140	22.5	110	25	12	1/4"G	M14	M27X2	32	10	M12	27	10	78	88	24
160	72	180	26.5	140	30	13	3/8"G	M20	M36X2	40	12	M16	36	12	87	99	30
200	72	220	26.5	175	30	13	3/8"G	M20	M36X2	40	12	M16	36	12	87	99	30
250	84	270	35	220	30	16	1/2"G	M24X2	M42X2	50	16	M20	46	15	125	140	36

PJ

DOPPIO EFFETTO STELO PASSANTE MAGNETICO

DOUBLE ACTING MAGNETIC WITH DOUBLE ROD END
DOPPELTWIRKEND DURCHGEHENDER KOLBEN MAGNETISCH
DOUBLE EFFET TIGE TRAVERSANTE MAGNÉTIQUE
DOBLE EFECTO VÁSTAGO PASANTE MAGNÉTICO
DUPLA AÇÃO HASTE PASSANTE MAGNÉTICO



∅	A	E	G	TG	AF	BG	EE	KF	KK	MM	PL	RT	SW	WH	ZA	ZB	SW1
125	54	140	22.5	110	25	12	1/4"G	M14	M27X2	32	10	M12	27	10	78	88	24
160	72	180	26.5	140	30	13	3/8"G	M20	M36X2	40	12	M16	36	12	87	99	30
200	72	220	26.5	175	30	13	3/8"G	M20	M36X2	40	12	M16	36	12	87	99	30
250	84	270	35	220	30	16	1/2"G	M24X2	M42X2	50	16	M20	46	15	125	140	36

Архангельск (8182)63-90-72
Астана (7172)727-132
Астрахань (8512)99-46-04
Барнаул (3852)73-04-60
Белгород (4722)40-23-64
Брянск (4832)59-03-52
Владивосток (423)249-28-31
Волгоград (844)278-03-48
Вологда (8172)26-41-59
Воронеж (473)204-51-73
Екатеринбург (343)384-55-89
Иваново (4932)77-34-06

Ижевск (3412)26-03-58
Иркутск (395)279-98-46
Казань (843)206-01-48
Калининград (4012)72-03-81
Калуга (4842)92-23-67
Кемерово (3842)65-04-62
Киров (8332)68-02-04
Краснодар (861)203-40-90
Красноярск (391)204-63-61
Курск (4712)77-13-04
Липецк (4742)52-20-81
Киргизия (996)312-96-26-47

Магнитогорск (3519)55-03-13
Москва (495)268-04-70
Мурманск (8152)59-64-93
Набережные Челны (8552)20-53-41
Нижний Новгород (831)429-08-12
Новокузнецк (3843)20-46-81
Новосибирск (383)227-86-73
Омск (3812)21-46-40
Орел (4862)44-53-42
Оренбург (3532)37-68-04
Пенза (8412)22-31-16
Казахстан (772)734-952-31

Пермь (342)205-81-47
Ростов-на-Дону (863)308-18-15
Рязань (4912)46-61-64
Самара (846)206-03-16
Санкт-Петербург (812)309-46-40
Саратов (845)249-38-78
Севастополь (8692)22-31-93
Симферополь (3652)67-13-56
Смоленск (4812)29-41-54
Сочи (862)225-72-31
Ставрополь (8652)20-65-13
Таджикистан (992)427-82-92-69

Сургут (3462)77-98-35
Тверь (4822)63-31-35
Томск (3822)98-41-53
Тула (4872)74-02-29
Тюмень (3452)66-21-18
Ульяновск (8422)24-23-59
Уфа (347)229-48-12
Хабаровск (4212)92-98-04
Челябинск (351)202-03-61
Череповец (8202)49-02-64
Ярославль (4852)69-52-93