

SERIE GR01F - PINZE PNEUMATICHE

PNEUMATIC GRIPPER
PNEUMATISCHE GREIFER
PINCE PNEUMATIQUE
PINZA NEUMÁTICA
GARRA PNEUMÁTICA



CARATTERISTICHE TECNICHE

TECHNICAL CHARACTERISTICS
TECHNISCHE ANGABEN
CARACTÉRISTIQUES TECHNIQUES
CARACTERÍSTICAS TÉCNICAS
CARACTERÍSTICAS TÉCNICAS



1907/2006
REACH ✓
2011/65/CE
RoHS ✓
SILICON
FREE



Materiali <ul style="list-style-type: none"> Corpo: Lega Alluminio Stelo: Acciaio Guarnizioni: NBR 	IT	Materials <ul style="list-style-type: none"> Body: Anodized Aluminum alloy Piston rod: Anodized Aluminum alloy NBR seal 	GB	Materialien <ul style="list-style-type: none"> Körper: eloxierte Aluminium-Legierung Kolbenstange: eloxierte Aluminium-Legierung Dichtungen: NBR 	DE
Matériaux <ul style="list-style-type: none"> Corps: alliage d'aluminium anodisé Tige: alliage d'aluminium anodisé Joints NBR 	FR	Materiales <ul style="list-style-type: none"> Cuerpo: Aleación de aluminio anodizado Eje: Aleación de aluminio anodizado Juntas en NBR 	ES	Materials <ul style="list-style-type: none"> Corpo: Liga de aluminio Haste: Aço Vedações: NBR 	PT



Pressioni

Pressures
Druckbereich
Pressions
Presiones
Pressões

Ø	10	16	20	25
bar	min	2		2,5
	max	7		7



Temperature

Temperatures
Temperatur
Températures
Temperaturas
Temperaturas

-10 °C
+ 60 °C



Fluidi compatibili

Aria (Lubrificazione non necessaria).
Fluids
Air (Lubrication not necessary).
Geeignete Medien
Luft (Schmierung nicht erforderlich).
Fluides compatibles
Air (Lubrification pas nécessaire).
Fluidos compatibles
Aire (Lubrificación no necesaria).
Fluidos compatíveis
Ar (Lubrificação não necessária).



Alesaggi

Bores
Durchmesser
Diamètres
Diámetros
Diâmetros

10-16-20-25 mm



Ripetibilità

Action tolerance
Wiederholgenauigkeit
Répétitivité
Repetibilidad
Repetibilidade

± 0,01 mm



Frequenza massima d'esercizio

Max. Operating frequency
Maximale Betriebsfrequenz
Fréquence d'utilisation maximum
Frecuencia máxima de ejercicio
Frequência máxima de trabalho

180 c.p.m.

Архангельск (8182)63-90-72
Астана (7172)727-132
Астрахань (8512)99-46-04
Барнаул (3852)73-04-60
Белгород (4722)40-23-64
Брянск (4832)59-03-52
Владивосток (423)249-28-31
Волгоград (844)278-03-48
Вологда (8172)26-41-59
Воронеж (473)204-51-73
Екатеринбург (343)384-55-89
Иваново (4932)77-34-06

Ижевск (3412)26-03-58
Иркутск (395)279-98-46
Казань (843)206-01-48
Калининград (4012)72-03-81
Калуга (4842)92-23-67
Кемерово (3842)65-04-62
Киров (8332)68-02-04
Краснодар (861)203-40-90
Красноярск (391)204-63-61
Курск (4712)77-13-04
Липецк (4742)52-20-81
Киргизия (996)312-96-26-47

Магнитогорск (3519)55-03-13
Москва (495)268-04-70
Мурманск (8152)59-64-93
Набережные Челны (8552)20-53-41
Нижний Новгород (831)429-08-12
Новокузнецк (3843)20-46-81
Новосибирск (383)227-86-73
Омск (3812)21-46-40
Орел (4862)44-53-42
Оренбург (3532)37-68-04
Пенза (8412)22-31-16
Казахстан (772)734-952-31

Пермь (342)205-81-47
Ростов-на-Дону (863)308-18-15
Рязань (4912)46-61-64
Самара (846)206-03-16
Санкт-Петербург (812)309-46-40
Саратов (845)249-38-78
Севастополь (8692)22-31-93
Симферополь (3652)67-13-56
Смоленск (4812)29-41-54
Сочи (862)225-72-31
Ставрополь (8652)20-65-13
Таджикистан (992)427-82-92-69

Сургут (3462)77-98-35
Тверь (4822)63-31-35
Томск (3822)98-41-53
Тула (4872)74-02-29
Тюмень (3452)66-21-18
Ульяновск (8422)24-23-59
Уфа (347)229-48-12
Хабаровск (4212)92-98-04
Челябинск (351)202-03-61
Череповец (8202)49-02-64
Ярославль (4852)69-52-93



Ø	Gripping Force (5 bar)		Opening/Closing angle both sides (mm)	Weight excluding Sensor (g)
	Holding moment (effective value)			
	External Gripping Force (N)	Internal Gripping Force (N)		
10	11	17	4	39
16	34	45	6	91
20	42	66	10	180
25	65	104	14	311



Tabella dei codici di ordinazione

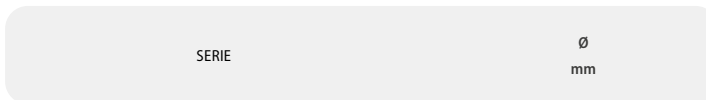
Ordering codes

Bestellschlüssel

Code de commande

Tabla de codificación para pedidos

Tabela de codificação para compra



G R O 1 F **0 1 0**

Doppio Effetto Magnetico 010
 Double Acting Magnetic 016
 Doppelwirkend Magnetisch 020
 Double Effet Magnétique 025
 Doble efecto magnético
 Dupla Ação Magnético



Sensori consigliati

Sensors recommended

Empfohlene Sensoren

Capteurs recommandés

Sensores recomendados

Sensores aconselhados

DC 03 PM8 DC 04 PM8
DC 03 P2M DC 04 P2M



Adattatore per sensore

Sensor adapter

Sensor Adapter

Adaptateur pour capteur

Adaptador para sensor

Adaptador para sensor

DC 10 001



Punto di presa esterna

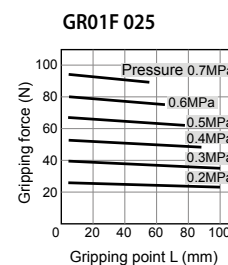
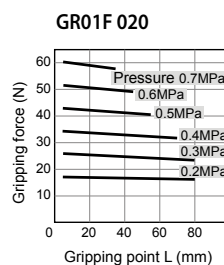
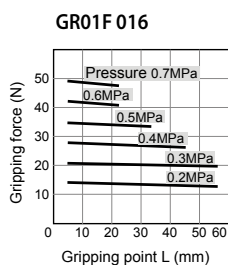
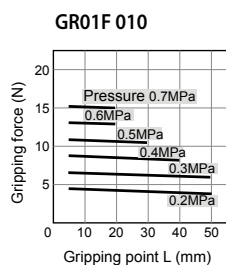
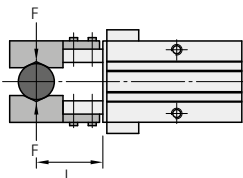
External Gripping point

Externer Greifpunkt

Force de préhension externe

Punto de agarre externo

Ponto de pega externa



Punto di presa interna

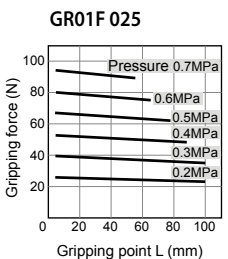
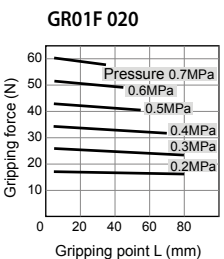
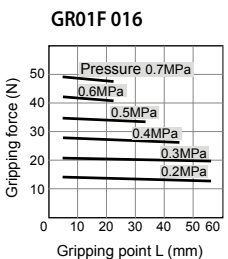
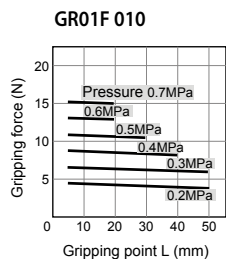
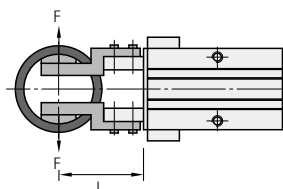
Internal Gripping point

Interner Greifpunkt

Force de préhension interne

Punto de agarre interno

Ponto de pega interno





- | | | |
|--|--|--|
| IT | GB | DE |
| <ul style="list-style-type: none"> La pinza automatica deve essere azionata in modo tale che il punto di presa del carico "L" e il totale del braccio "H" si trovino entro il campo indicato per ogni pressione d'esercizio riportata nei grafici. Se il punto di presa oltrepassa i limiti concessi, può compromettere la durata della pinza. | <ul style="list-style-type: none"> The air gripper should be operated so that the work piece gripping point "L" and the amount of overhang "H" stay within the range shown for each operating pressure given in the graphs to the right. If the work piece gripping point goes beyond the range limits, this will have an adverse effect on the life of the air gripper. | <ul style="list-style-type: none"> Der automatische Greifer muss so betrieben werden, dass der Greifpunkt der Last "L" und der ganze Arm "H" sich innerhalb des im Diagramm beschriebenen Druckbereichs befinden. Wenn der Greifpunkt über die Bereichsgrenzen geht, kann es die Haltbarkeit des Greifers beeinträchtigen. |
| FR | ES | PT |
| <ul style="list-style-type: none"> La pince pneumatique doit être utilisée d'une manière telle que le point "L" et le total du bras "H" de sortie de charge soient dans la plage de valeurs indiquée pour chaque pression de fonctionnement donnée dans les graphiques. Sortie de cette plage de valeur, la durée de vie de la pince peut être affectée. | <ul style="list-style-type: none"> La pinza automática debe ser accionada en modo que el punto de agarre de la carga "L" y el total de brazo "H" de encuentren dentro del campo indicado para cada presión de ejercicio indicada en el gráfico. Si el punto de agarre supera los límites permitidos, puede poner el peligro la durabilidad de la pinza. | <ul style="list-style-type: none"> A garra deve ser aplicada de modo tal que o ponto de pega da carga "L" e o total do braço "H" se encontrem dentro dos limites indicados para cada pressão de trabalho e que são apresentados no gráfico ao lado. Se o ponto de pega estiver além dos limites apresentados, isto terá um efeito adverso na vida útil da garra. |

Punto di presa esterna

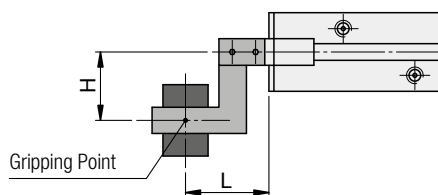
External Gripping point

Externer Greifpunkt

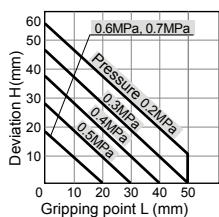
Force de préhension externe

Punto de agarre externo

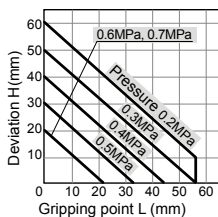
Ponto de pega externo



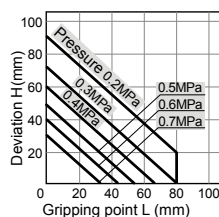
GR01F 010



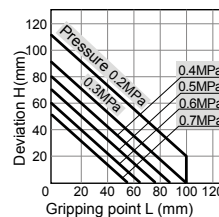
GR01F 016



GR01F 020



GR01F 025



Punto di presa interna

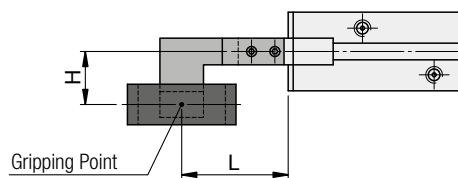
Internal Gripping point

Interner Greifpunkt

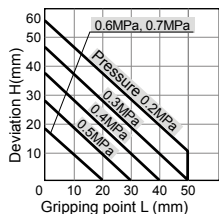
Force de préhension interne

Punto de agarre interno

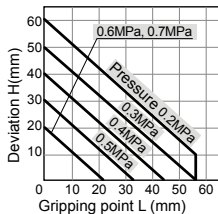
Ponto de pega interno



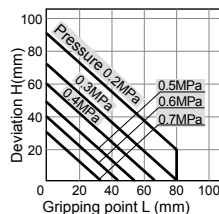
GR01F 010



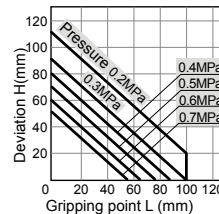
GR01F 016



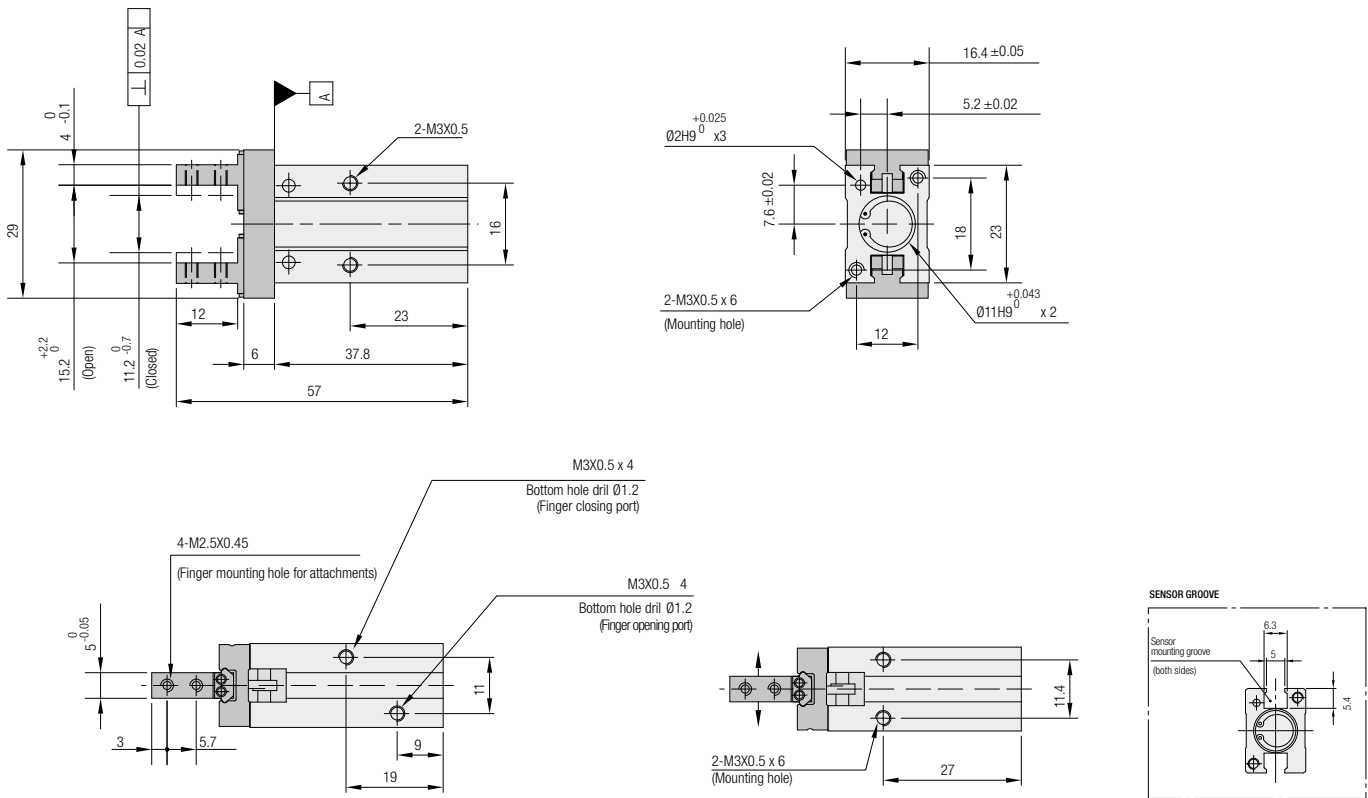
GR01F 020



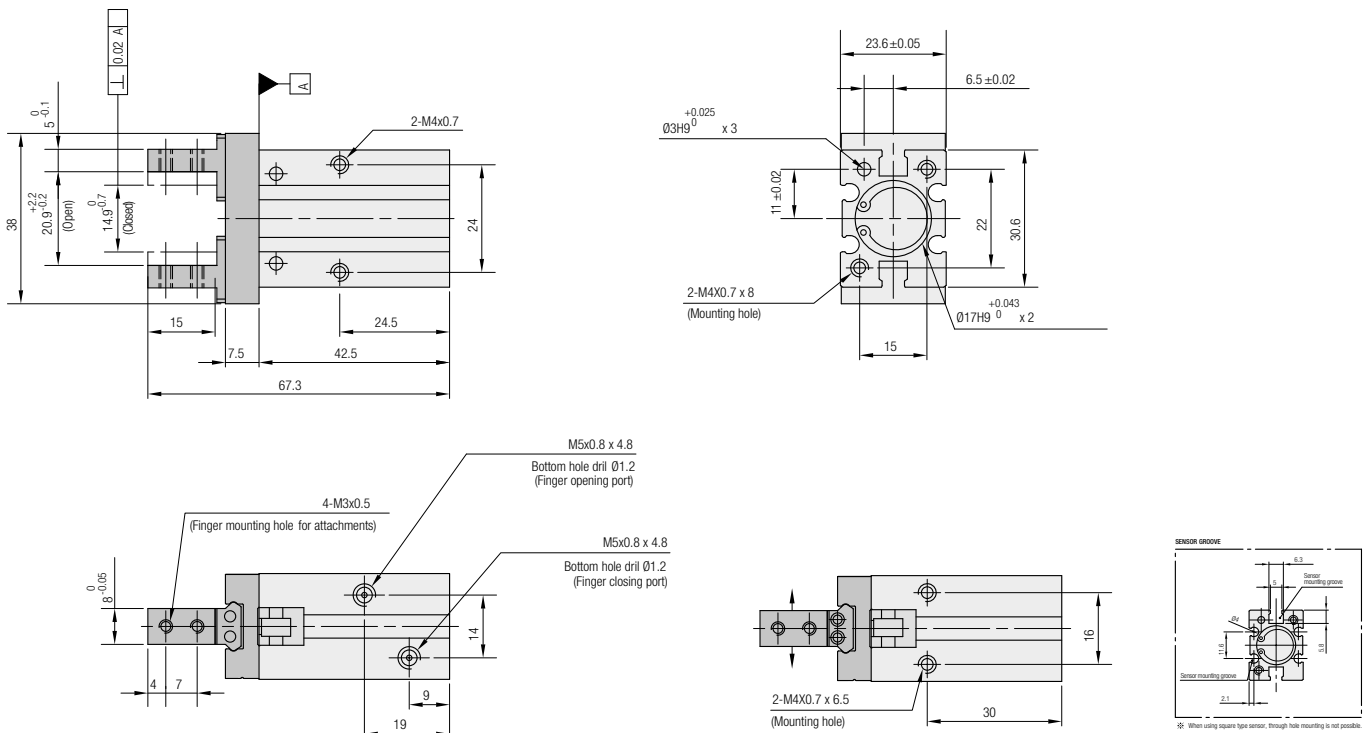
GR01F 025



GR01F 010



GR01F 016



* When using square type sensor, through hole mounting is not possible.

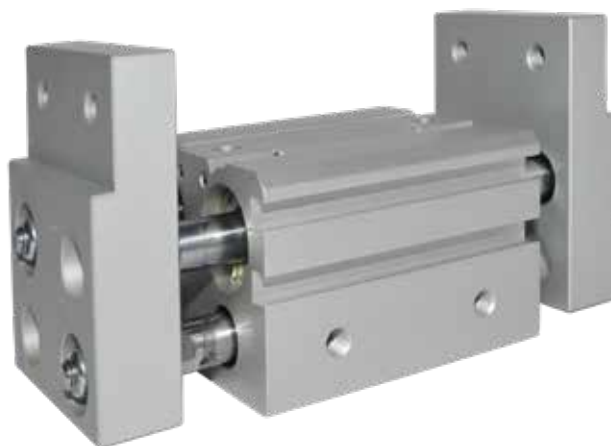
SERIE GR02F - PINZE PNEUMATICHE LARGHE

WIDE TYPE PNEUMATIC GRIPPER
GROSSER PNEUMATISCHER GREIFER
PINCE PNEUMATIQUE LARGE
PINZA NEUMÁTICA LARGA
GARRA PNEUMÁTICA LARGA



CARATTERISTICHE TECNICHE

TECHNICAL CHARACTERISTICS
TECHNISCHE ANGABEN
CARACTÉRISTIQUES TECHNIQUES
CARACTERÍSTICAS TÉCNICAS
CARACTERÍSTICAS TÉCNICAS



1907/2006

REACH

2011/65/CE

RoHS

SILICON
FREE

Materiali

IT

- Corpo: Lega Alluminio
- Stelo: Acciaio
- Guarnizioni: NBR

Materials

GB

- Body: Aluminum alloy
- Piston rod: Steel
- NBR seal

Materialien

DE

- Körper: Aluminiumlegierung
- Kolbenstange: Stahl
- Dichtung: NBR

Matériaux

FR

- Corps: Alliage d'aluminium
- Tige: Acier
- Joints: NBR

Materiales

ES

- Cuerpo: Aleación de aluminio
- Eje: Haceró
- Juntas: NBR

Materiais

PT

- Corpo: Liga de alumínio
- Haste: Aço
- Vedações: NBR



Pressioni

Pressures

Druckbereich

Pressions

Presiones

Pressões

Ø	10	16	20	25	32
bar	min	1,5		1	
	max	6		6	



Temperature

Temperatures

Temperatur

Températures

Temperaturas

Temperaturas

-10 °C

+60 °C



Fluidi compatibili

Aria (Lubrificazione non necessaria).

Fluids

Air (Lubrication not necessary).

Geeignete Medien

Luft (Schmierung nicht erforderlich).

Fluides compatibles

Air (Lubrification pas nécessaire).

Fluidos compatibles

Aire (Lubrificación no necesaria).

Fluidos compatíveis

Ar (Lubrificação não necessária).



Alesaggi

Bores

Durchmesser

Diamètres

Diámetros

Diâmetros

10-16-20-25-32 mm



Forza effettiva di presa a 5 bar

Effective gripping force at 5 bar

Effektive Greifkraft bei 5 bar

Force de préhension effective à 5 bar

Fuerza efectiva de agarre 5 bar

Força efetiva de agarre a 5 bar

	Ø				
	10	16	20	25	32
	14	45	74	131	228

(Unit: N)



Tolleranza di movimento

Action tolerance

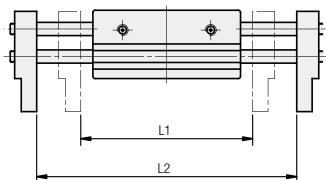
BewegungstoleranzX

Tolerancia de movimiento

Tolerância de movimento

Course

± 0,2



Ø	Max operating frequency c.p.m	Opening/closing stroke (mm)	Width at closing (mm)	Width at opening (mm)	Weight (g)
		L2-L1	L1	L2	
10	60	20	56	76	280
16	60	30	68	98	585
20	60	40	82	122	1025
25	60	50	100	150	1690
32	30	70	150	220	2905



Punto di presa

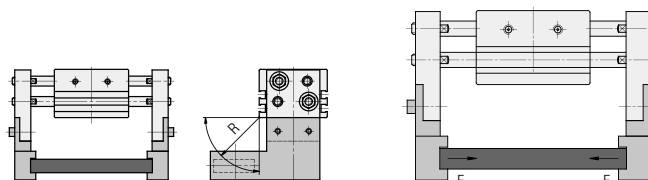
Gripping point

Greifpunkte

Point de préhension

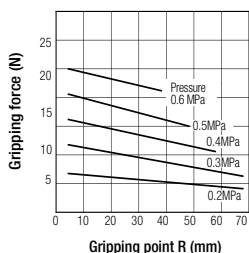
Punto de agarre

Ponto de pega

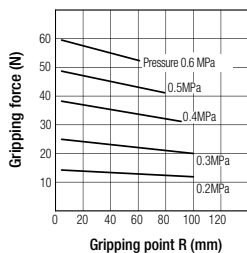


R : gripping point mm
 1N ≈ 0.102 kgf
 1MPa ≈ 10.2 kgf/cm²

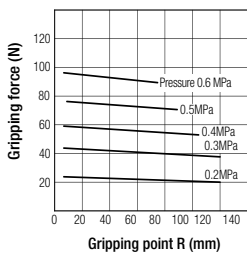
GR02F 010



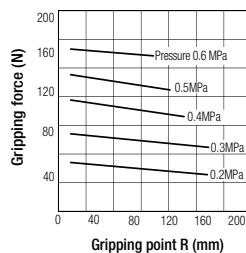
GR02F 016



GR02F 020



GR02F 025



GR02F 032

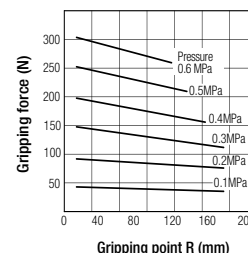


Tabella dei codici di ordinazione

Ordering codes

Bestellschlüssel

Code de commande

Tabla de codificación para pedidos

Tabela de codificação para compra

SERIE	Ø mm
-------	---------

G R 0 2 F 0 1 0

Doppio Effetto Magnetico 010
 Double Acting Magnetic 016
 Doppeltwirkend Magnetisch 020
 Double Effet Magnétique 025
 Doble efecto magnético 032
 Dupla Ação Magnético



Sensori consigliati

Sensors recommended

Empfohlene Sensoren

Capteurs recommandés

Sensores recomendados

Sensores aconselhados

DC 03 PM8

DC 04 PM8

DC 03 P2M

DC 04 P2M



Adattatore per sensore

Sensor adapter

Sensor Adapter

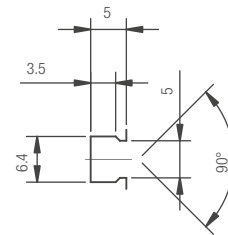
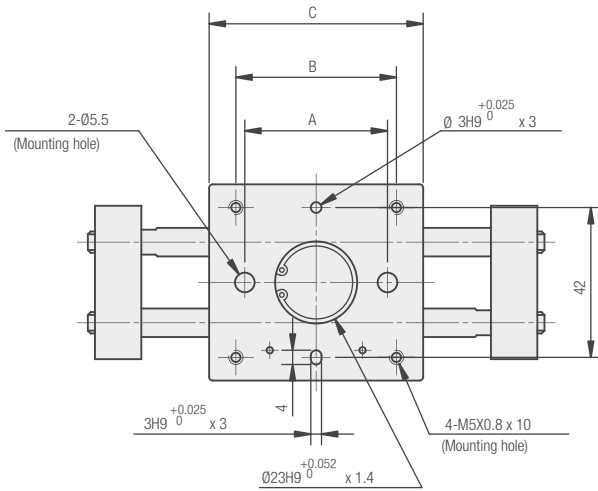
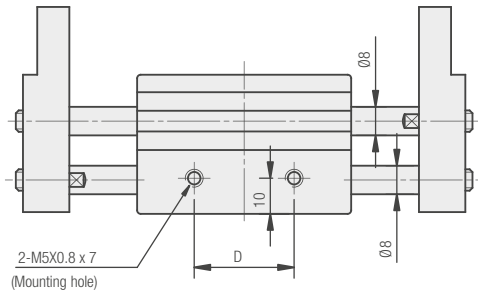
Adaptateur pour capteur

Adaptador para sensor

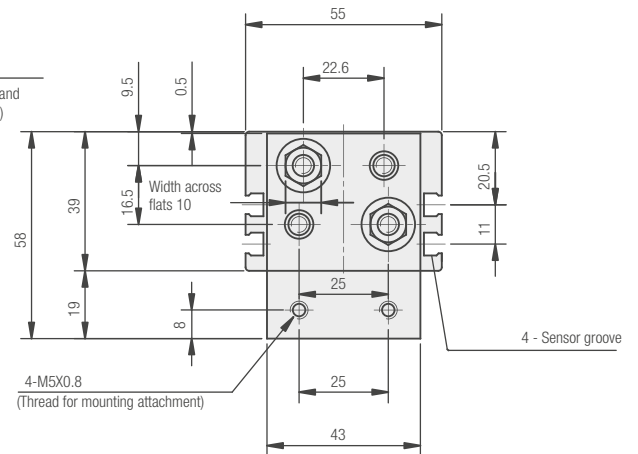
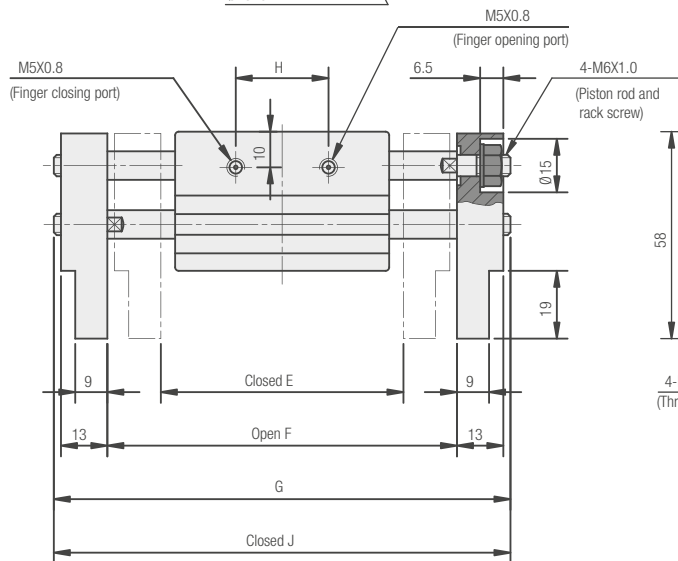
Adaptador para sensor

DC 10 001

GR02F 016

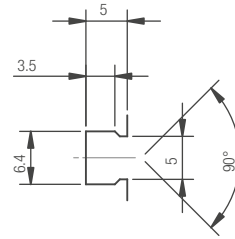
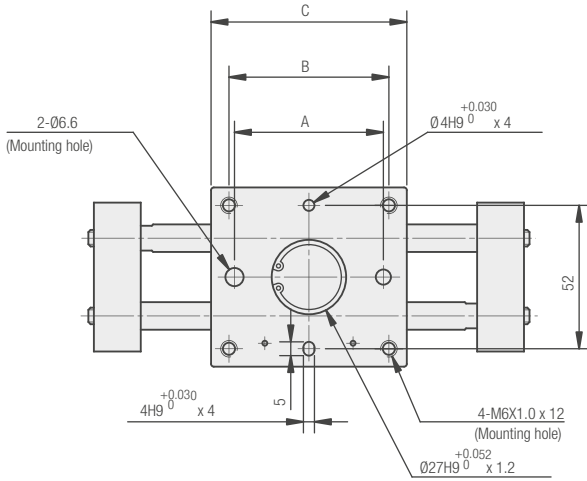
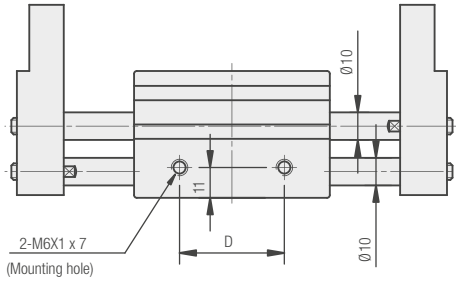


Sensor groove dimensions

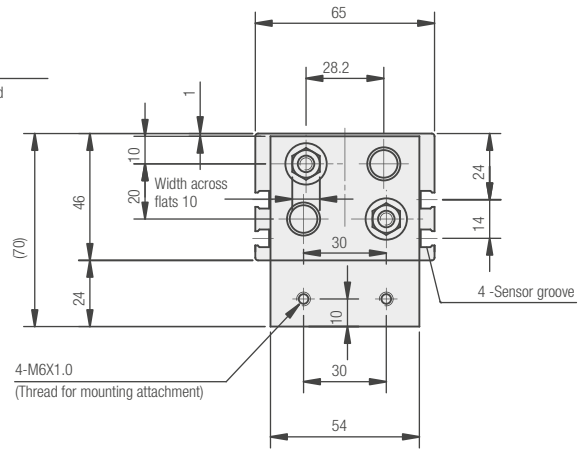
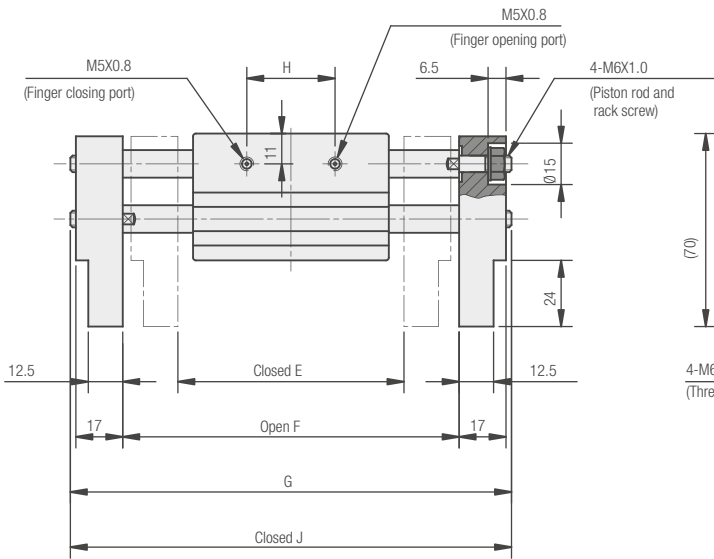


A	B	C	D	E	F	G	H	J
40	45	60	28	68	98	128	26	98

GR02F 020

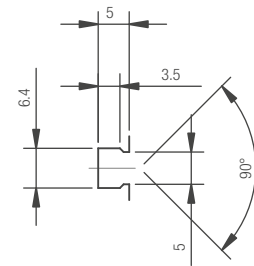
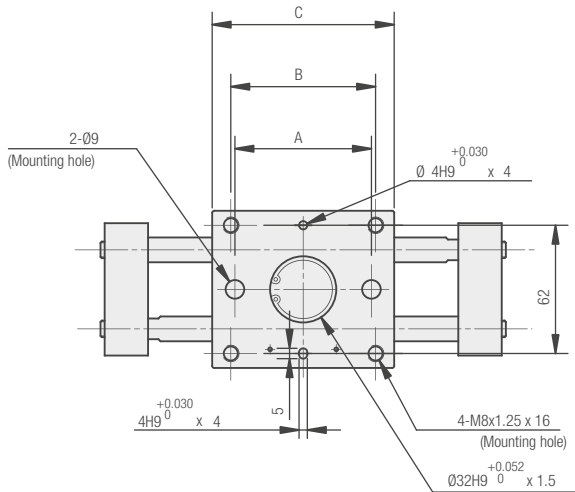
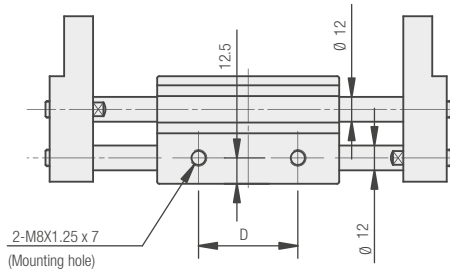


Sensor groove dimensions

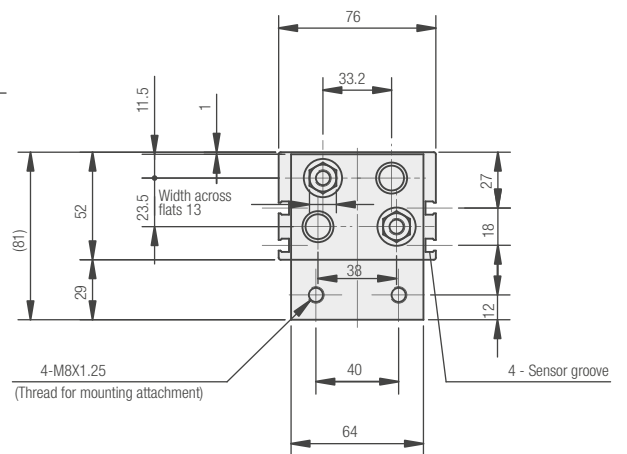
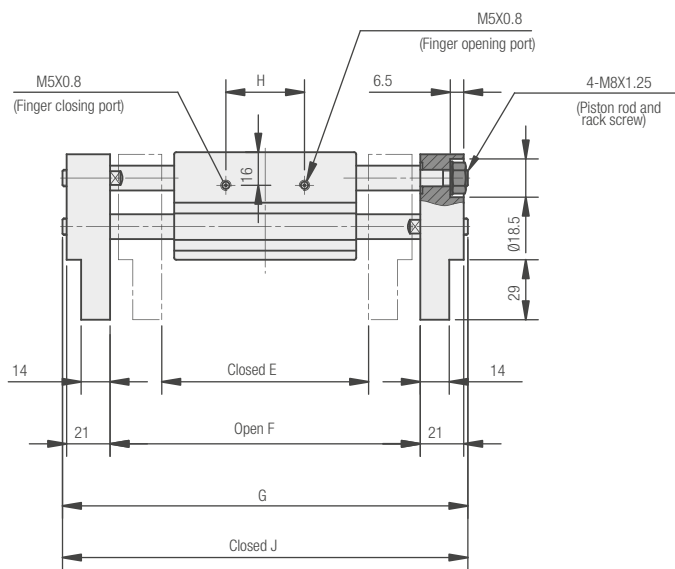


A	B	C	D	E	F	G	H	J
54	58	71	38	82	122	160	32	120

GR02F 025

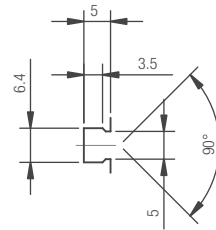
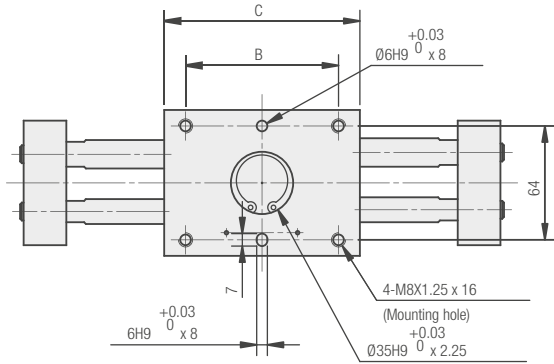
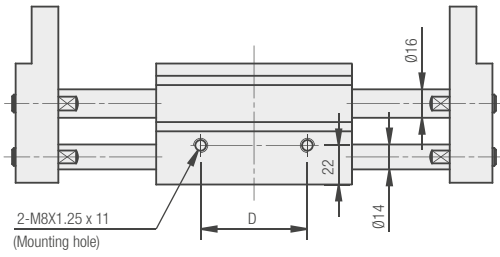


Sensor groove dimensions

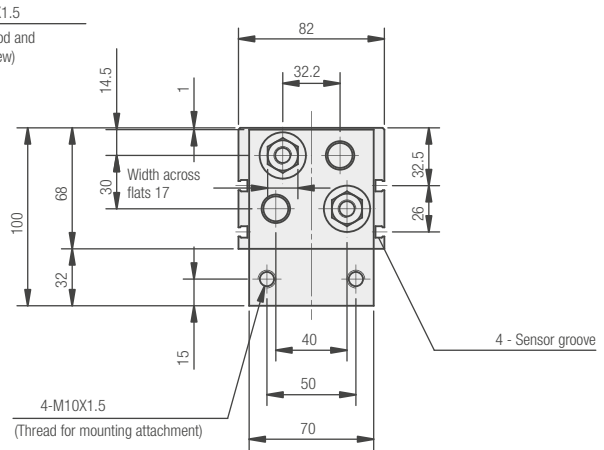
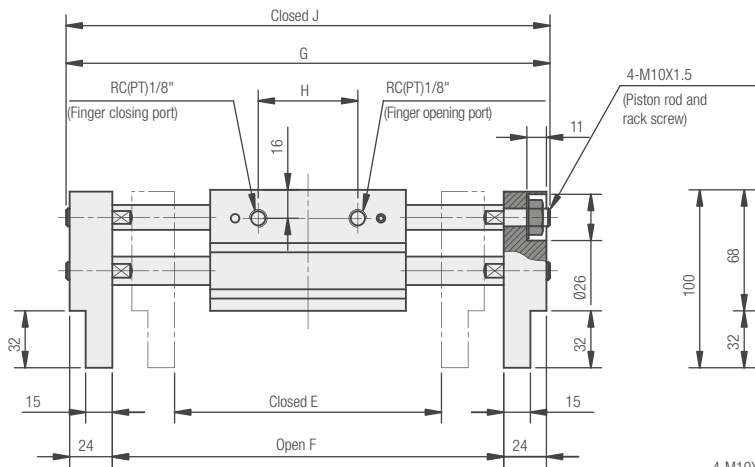


A	B	C	D	E	F	G	H	J
66	70	88	48	100	150	196	38	146

GR02F 032



Sensor groove dimensions



B	C	D	E	F	G	H	J
86	110	60	150	220	272	56	202

SERIE GR03F - PINZE PNEUMATICHE AD APERTURA ANGOLARE

PNEUMATIC ANGULAR GRIPPER
 PNEUMATISCHER GREIFER MIT WINKELOEFFNUNG
 PINCE PNEUMATIQUE A OUVERTURE ANGULAIRE
 PINZA NEUMÁTICA DE APERTURA ANGULAR
 GARRA PNEUMÁTICA DE ABERTURA ANGULAR



CARATTERISTICHE TECNICHE

TECHNICAL CHARACTERISTICS
 TECHNISCHE ANGABEN
 CARACTÉRISTIQUES TECHNIQUES
 CARACTERÍSTICAS TÉCNICAS
 CARACTERÍSTICAS TÉCNICAS



1907/2006
 REACH ✓

2011/65/CE
 RoHS ✓

SILICON
 FREE

Materiali	IT	Materials	GB	Materialien	DE
<ul style="list-style-type: none"> Corpo: Lega Alluminio Stelo: Acciaio Guarnizioni: NBR 		<ul style="list-style-type: none"> Body: Aluminum alloy Piston rod: Steel NBR seal 		<ul style="list-style-type: none"> Körper: Aluminiumlegierung Kolbenstange: Stahl Dichtung: NBR 	
Matériaux	FR	Materiales	ES	Materiais	PT
<ul style="list-style-type: none"> Corps: Alliage d'aluminium Tige : Acier Joints: NBR 		<ul style="list-style-type: none"> Cuerpo: Aleación de aluminio Eje: Hacerro Juntas: NBR 		<ul style="list-style-type: none"> Corpo : Liga de alumínio Haste : Aço Vedações : NBR 	



Pressioni

Pressures

Druckbereich

Pressions

Presiones

Pressões

1 bar (0.1 MPa)

6 bar (0.6 MPa)



Temperature

Temperatures

Temperatur

Températures

Temperaturas

Temperaturas

-10 °C

+ 60 °C



Fluidi compatibili

Aria (Lubrificazione non necessaria).

Fluids

Air (Lubrication not necessary).

Geeignete Medien

Luft (Schmierung nicht erforderlich).

Fluides compatibles

Air (Lubrification pas nécessaire).

Fluidos compatibles

Aire (Lubrificación no necesaria).

Fluidos compatíveis

Ar (Lubrificação não necessária).



Alesaggi

Bores

Durchmesser

Diamètres

Diámetros

Diâmetros

10-16-20-25 mm



Ripetibilità

Action tolerance

Wiederholgenauigkeit

Répétitivité

Repetibilidad

Repetibilidade

± 0,01 mm



Frequenza massima di esercizio

Max. Operating frequency

Maximale Betriebsfrequenz

Fréquence d'utilisation maximum

Frecuencia máxima de ejercicio

Frequência máxima de trabalho

180 c.p.m.

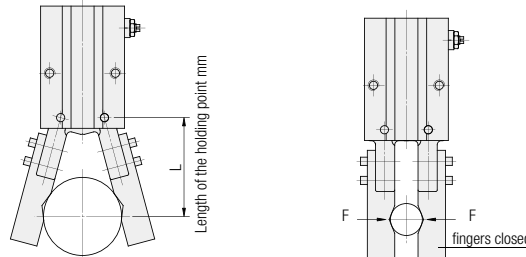


Code	Ø	Punto di presa Holding moment Greifmoment Point de préhension Punto de agarre Ponto de pega At 5 bar	Angolo di apertura/chiusura Opening/Closing angle Oeffnungs-/Schliesswinkel Angle d'ouverture/fermeture Angulo de apertura/cierre Angulo de abertur /fechamento (both side)	Peso Weight Gewicht Poids Peso Peso (g)
GR03F 010	10	1,0 N·m		39
GR03F 016	16	4,0 N·m		91
GR03F 020	20	7,1 N·m	30° ± -10°	180
GR03F 025	25	13,9 N·m		311



Punto di presa

- Holding point
- Greifmoment
- Point de préhension
- Punto de agarre
- Ponto de pega



Forza effettiva di presa

- Effective holding force
- Effektive Greifkraft
- Force de préhension effective
- Fuerza efectiva de agarre
- Força efetiva de agarre

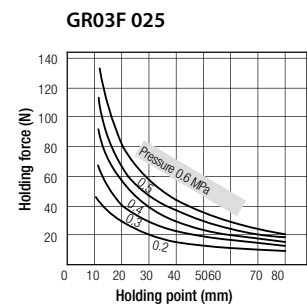
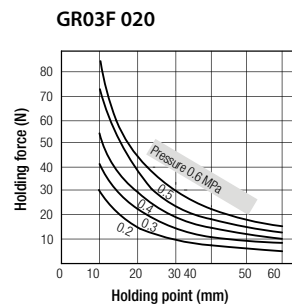
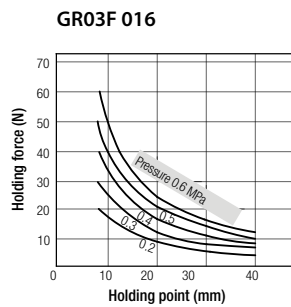
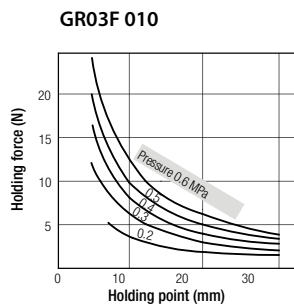
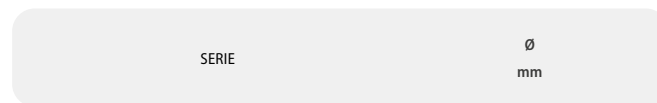


Tabella dei codici di ordinazione

- Ordering codes
- Bestellschlüssel
- Code de commande
- Tabla de codificación para pedidos
- Tabela de codificação para compra



G R 0 3 F **0 1 0**

Doppio Effetto Magnetico
Double Acting Magnetic
Doppeltwirkend Magnetisch
Double Efect Magnétique
Doble efecto magnético
Dupla Ação Magnético

010
016
020
025



Sensori consigliati

- Sensors recommended
- Empfohlene Sensoren
- Capteurs recommandés
- Sensores recomendados
- Sensores aconselhados

DC 03 PM8 DC 04 PM8
DC 03 P2M DC 04 P2M

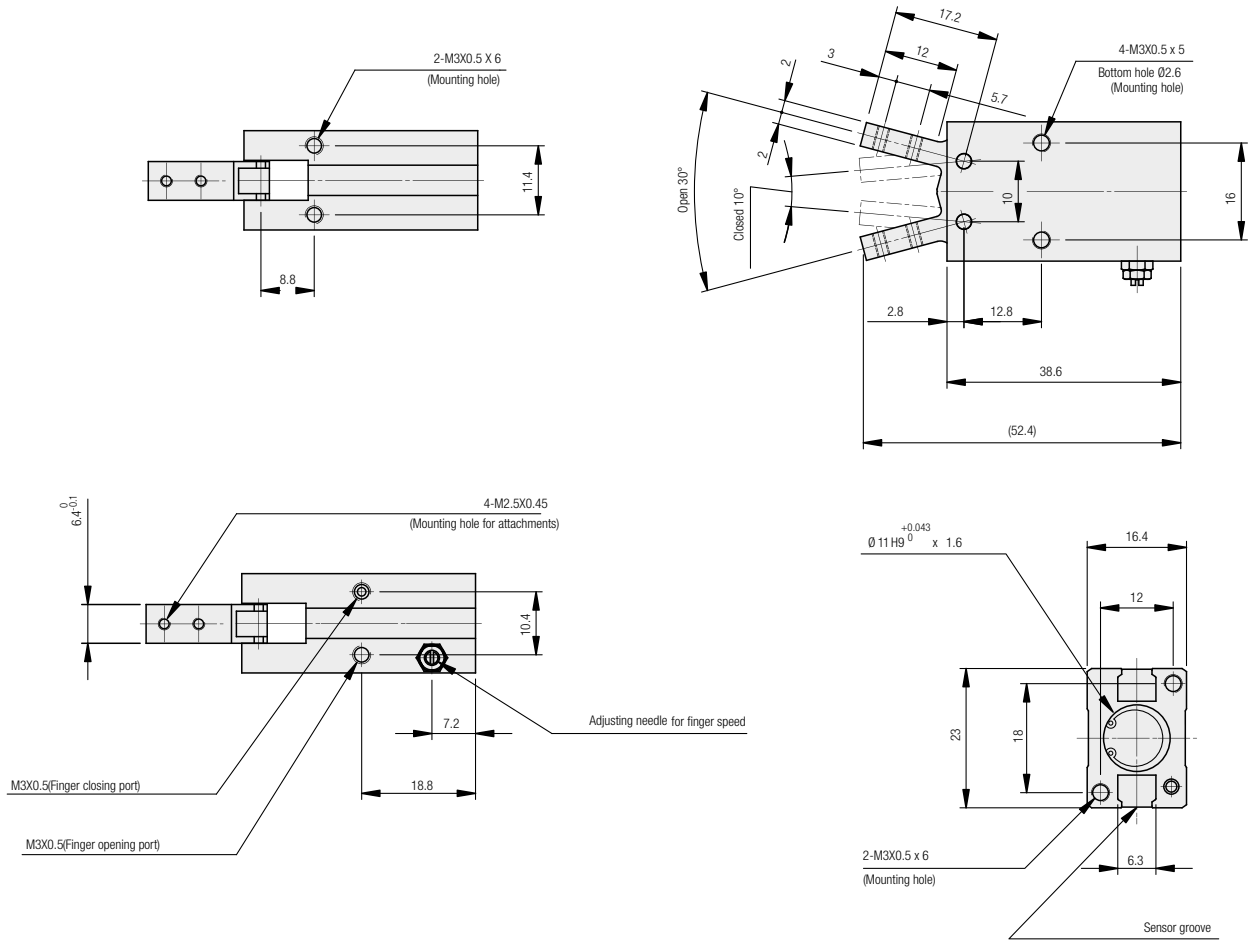


Adattatore per sensore

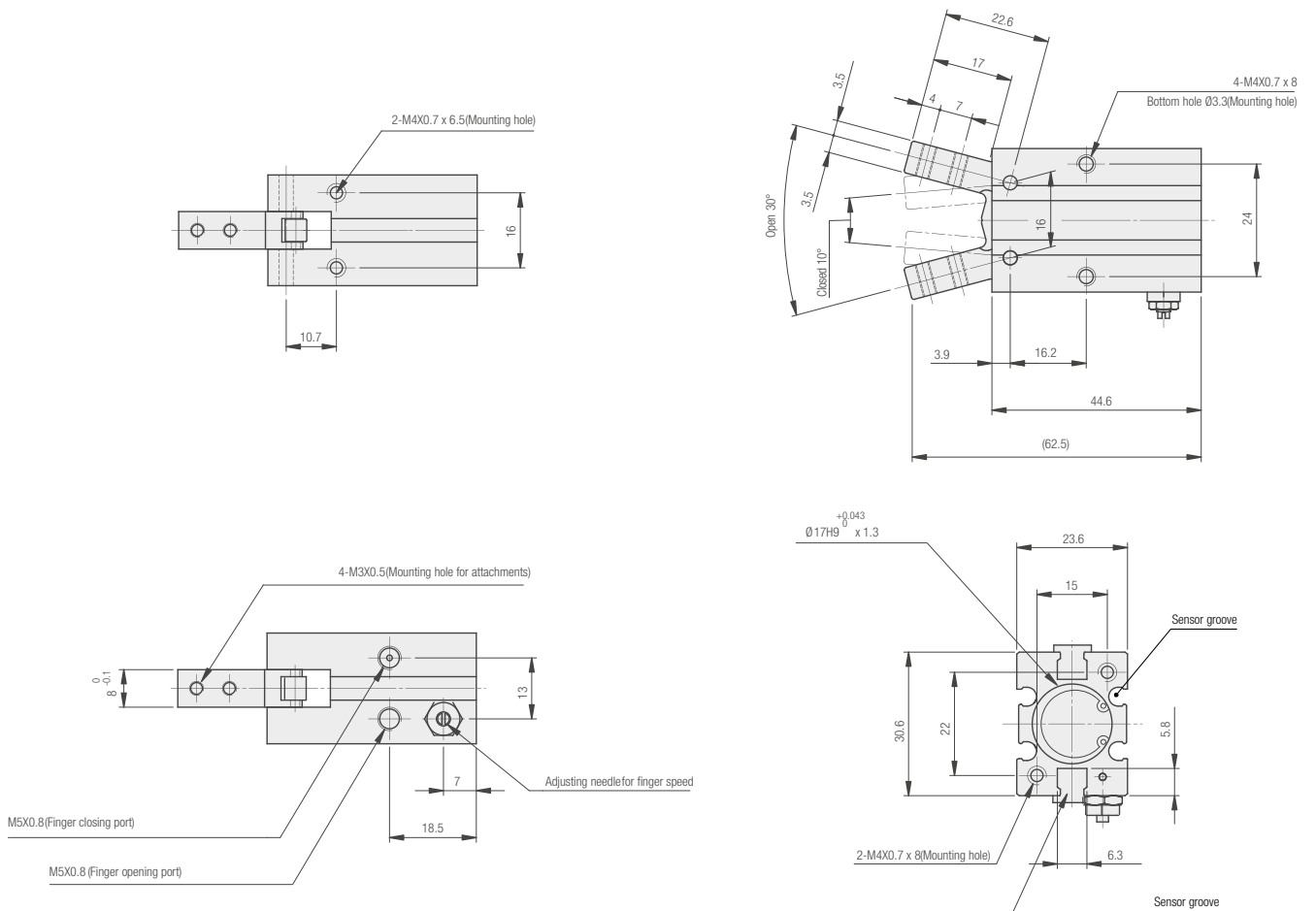
- Sensor adapter
- Sensor Adapter
- Adaptateur pour capteur
- Adaptador para sensor
- Adaptador para sensor

DC 10 001

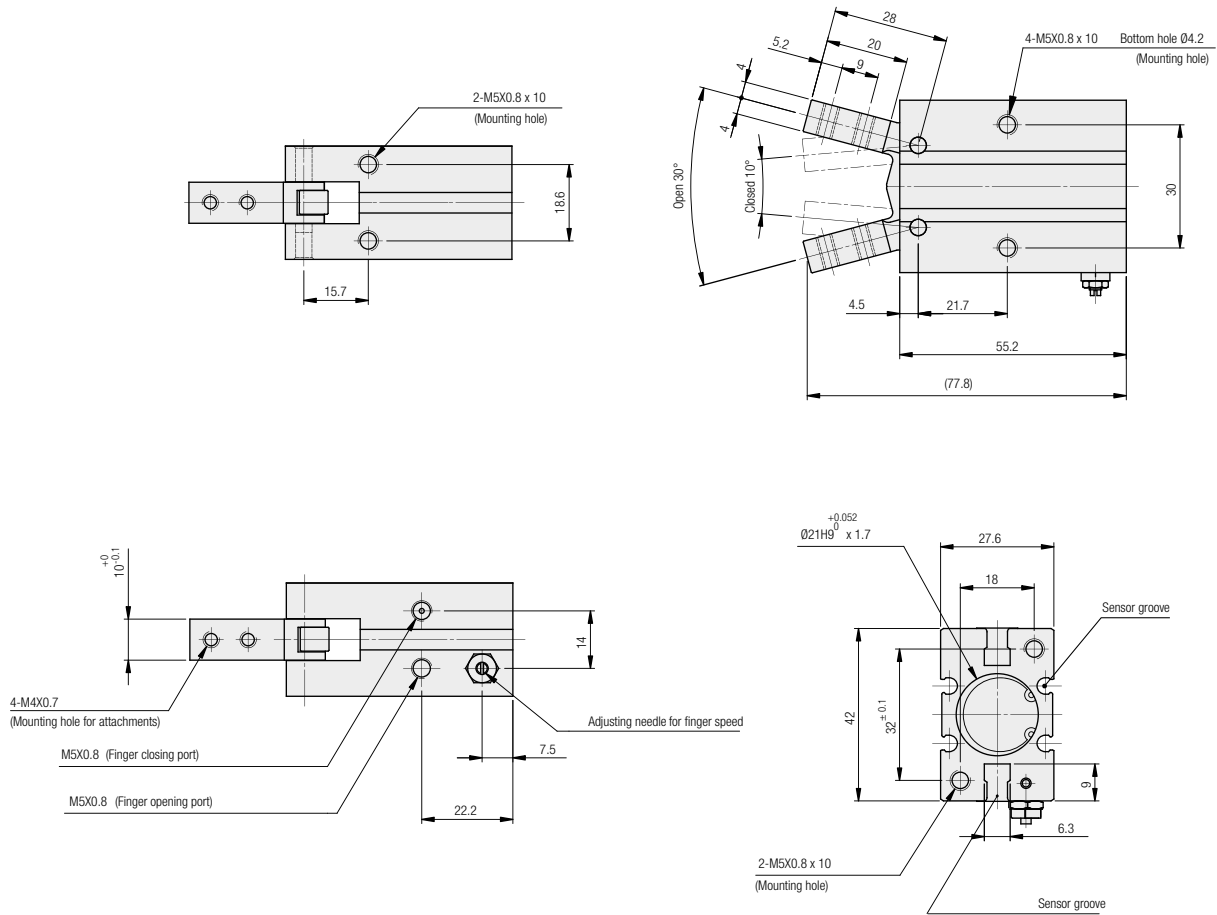
GR03F 010



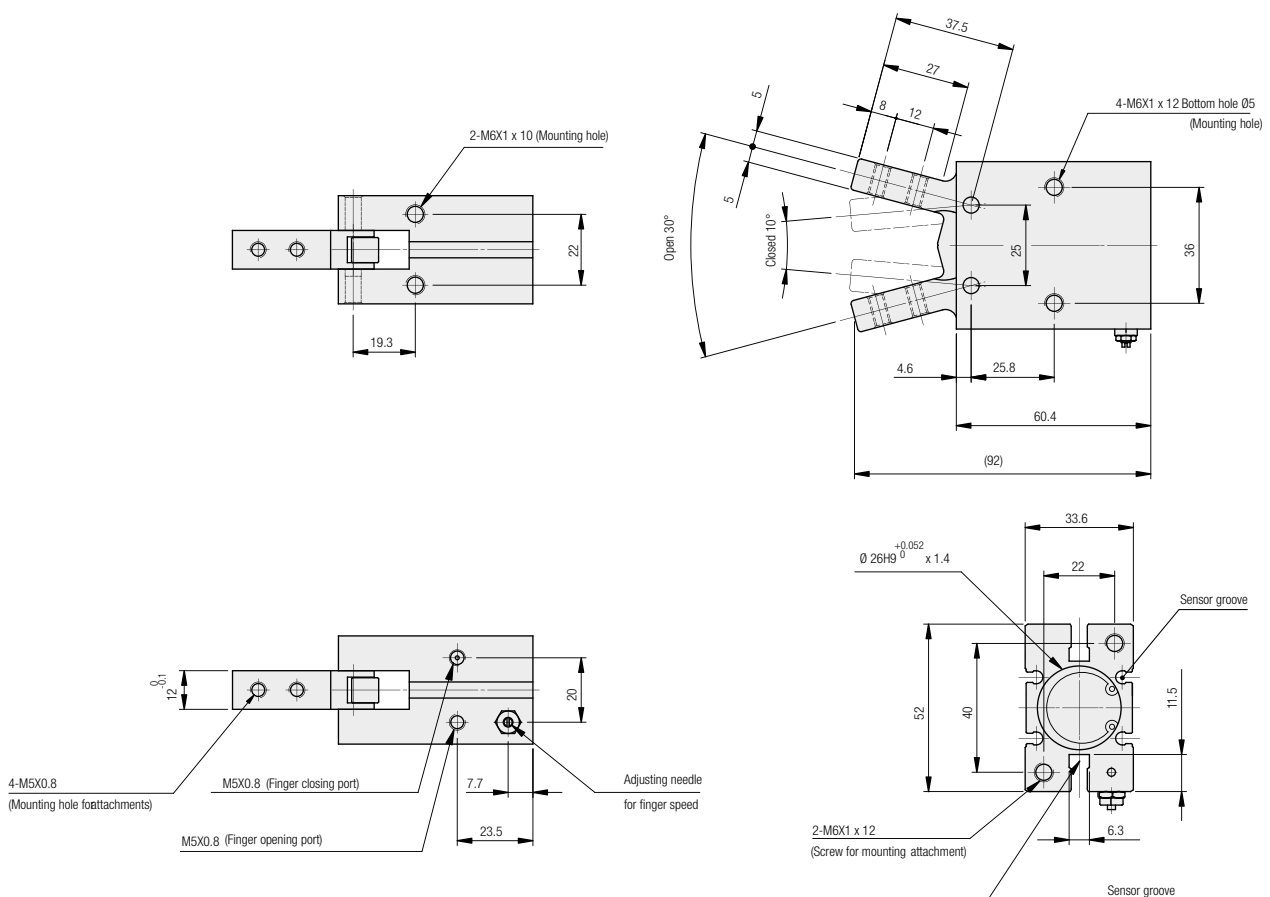
GR03F 016



GR03F 020



GR03F 025



SERIE GR04F - PINZE PNEUMATICHE AD APERTURA ANGOLARE 180°

PNEUMATIC 180° ANGULAR GRIPPER
 PNEUMATISCHER GREIFER MIT WINKELÖFFNUNG 180°
 PINCE PNEUMATIQUE A OUVERTURE ANGULAIRE 180°
 PINZA NEUMÁTICA DE APERTURA ANGULAR 180°
 GARRA PNEUMÁTICA DE ABERTURA ANGULAR 180°



CARATTERISTICHE TECNICHE

TECHNICAL CHARACTERISTICS
 TECHNISCHE ANGABEN
 CARACTÉRISTIQUES TECHNIQUES
 CARACTERÍSTICAS TÉCNICAS
 CARACTERÍSTICAS TÉCNICAS



1907/2006
REACH ✓
 2011/65/CE
RoHS ✓
 SILICON
 FREE



Materiali

IT

- Corpo: Lega Alluminio
- Guarnizioni: NBR
- Dita: Acciaio Sinterizzato

Materials

GB

- Body: Aluminum alloy
- NBR seal
- Finger: Sintered alloy steel

Materialien

DE

- Körper: Aluminiumlegierung
- Dichtung: NBR
- Finger: gesinterter Stahl

Matériaux

FR

- Corps: Alliage d'aluminium
- Joints: NBR
- Doigt : acier traité

Materiales

ES

- Cuerpo: Aleación de aluminio
- Juntas: NBR
- Dedo: Acero sinterizado

Materials

PT

- Corpo: Liga de alumínio
- Vedações : NBR
- Finger : Liga de aço sinterizado



Pressioni

Pressures
 Druckbereich
 Pressions
 Presiones
 Pressões

1 bar (0.1 MPa)

6 bar (0.6 MPa)



Temperature

Temperatures
 Temperatur
 Températures
 Temperaturas
 Temperaturas

-10 °C

+ 60 °C



Fluidi compatibili

Aria (Lubrificazione non necessaria).

Fluids

Air (Lubrication not necessary).

Geeignete Medien

Luft (Schmierung nicht erforderlich).

Fluides compatibles

Air (Lubrification pas nécessaire).

Fluidos compatibles

Aire (Lubrificación no necesaria).

Fluidos compatíveis

Ar (Lubrificação não necessária).



Alesaggi

Bores
 Durchmesser
 Diamètres
 Diámetros
 Diâmetros

10-16-20-25 mm



Ripetibilità

Action tolerance
 Wiederholgenauigkeit
 Répétitivité
 Repetibilidad
 Repetibilidade

± 0,2 mm



Frequenza massima d'esercizio

Max. Operating frequency
 Maximale Betriebsfrequenz
 Fréquence d'utilisation maximum
 Frecuencia máxima de ejercicio
 Frequência máxima de trabalho

60 c.p.m.



Peso della pinza

Gripper Weight

Gewicht Greifer

Poids de la pince

Peso de la pinza

Peso da garra

Ø mm			
10	16	20	25
68	146	310	545

(Unit: g)



Angolo di apertura/chiusura

Opening/Closing angle

Oeffnungs- /Schliesswinkel

Angle d'ouverture/fermeture

Ángulo de apertura/cierre

Ângulo de abertura/fechamento

Opening side	Closing side
178° ± 180°	-3°



Momento di presa a 5 bar

Holding Moment at 5 bar

Greifmoment bei 5 bar

Moment de préhension à 5 bar

Momento de agarre a 5 bar

Momento de pega a 5 bar

Ø mm			
10	16	20	25
0,16	0,54	1,10	2,28

(Unit: N · m)



Punto di presa

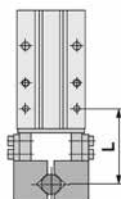
Holding point

Greifmoment

Moment de préhension

Punto de agarre

Ponto de pega



Forza effettiva di presa

Effective gripping force

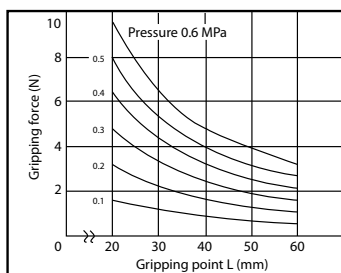
Effektive Greifkraft

Force de préhension effective

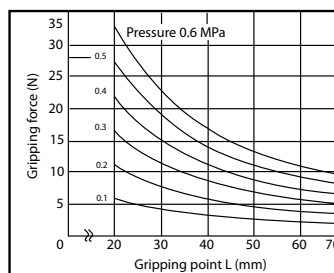
Fuerza efectiva de agarre

Força efetiva de agarre

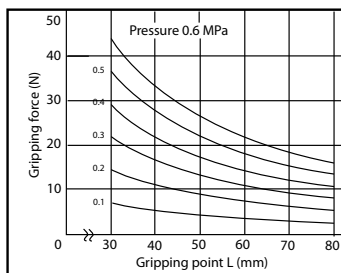
GR04F 010



GR04F 016



GR04F 020



GR04F 025

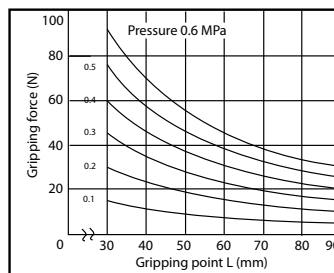


Tabella dei codici di ordinazione

Ordering codes

Bestellschlüssel

Code de commande

Tabla de codificación para pedidos

Tabela de codificação para compra

SERIE	Ø mm
-------	------

G R O 4 F

0 1 0

Doppio Effetto Magnetico
Double Acting Magnetic
Doppeltwirkend Magnetisch
Double Effet Magnétique
Doble efecto magnético
Dupla Ação Magnético

010
016
020
025



Sensori consigliati

Sensors recommended

Empfohlene Sensoren

Capteurs recommandés

Sensores recomendados

Sensores aconselhados

DC 01 RM8

DC 03 PM8

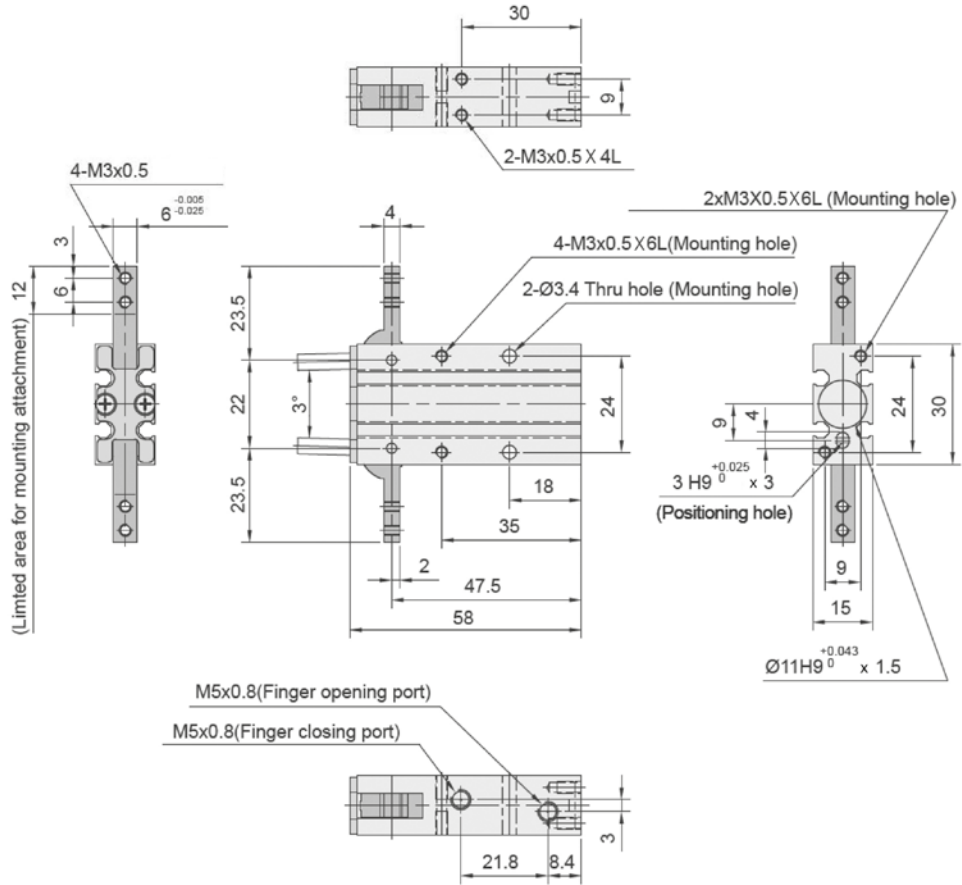
DC 04 PM8

DC 01 R2M

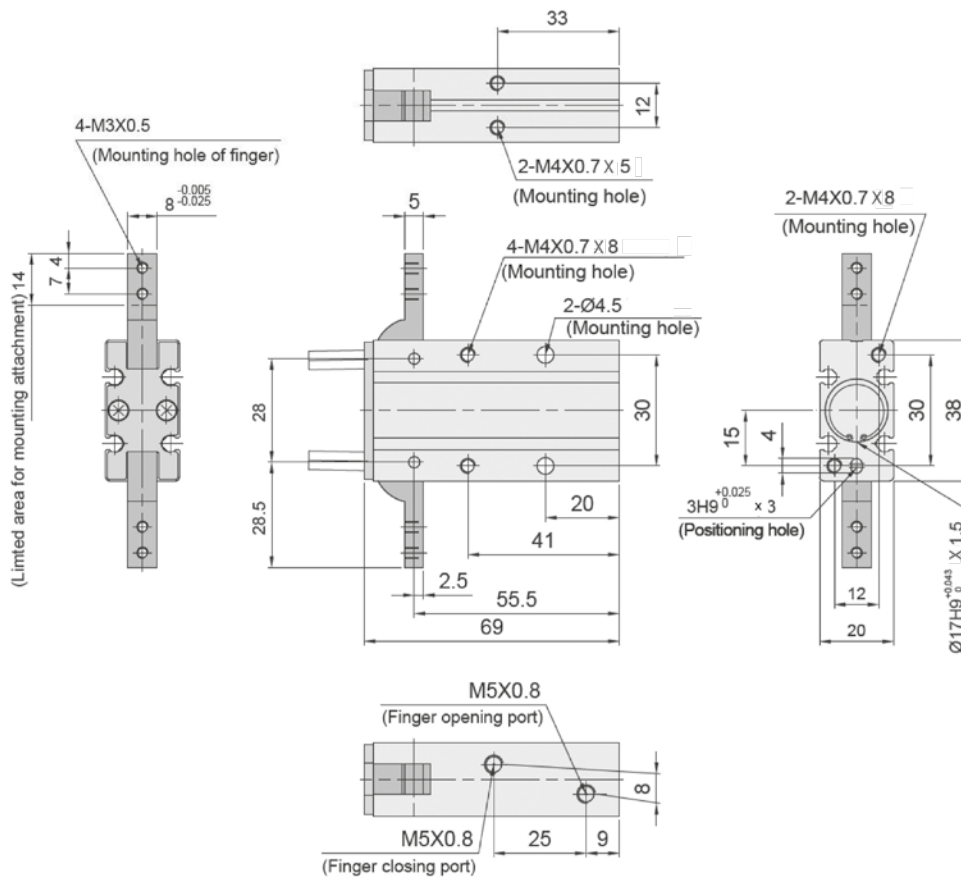
DC 03 P2M

DC 04 P2M

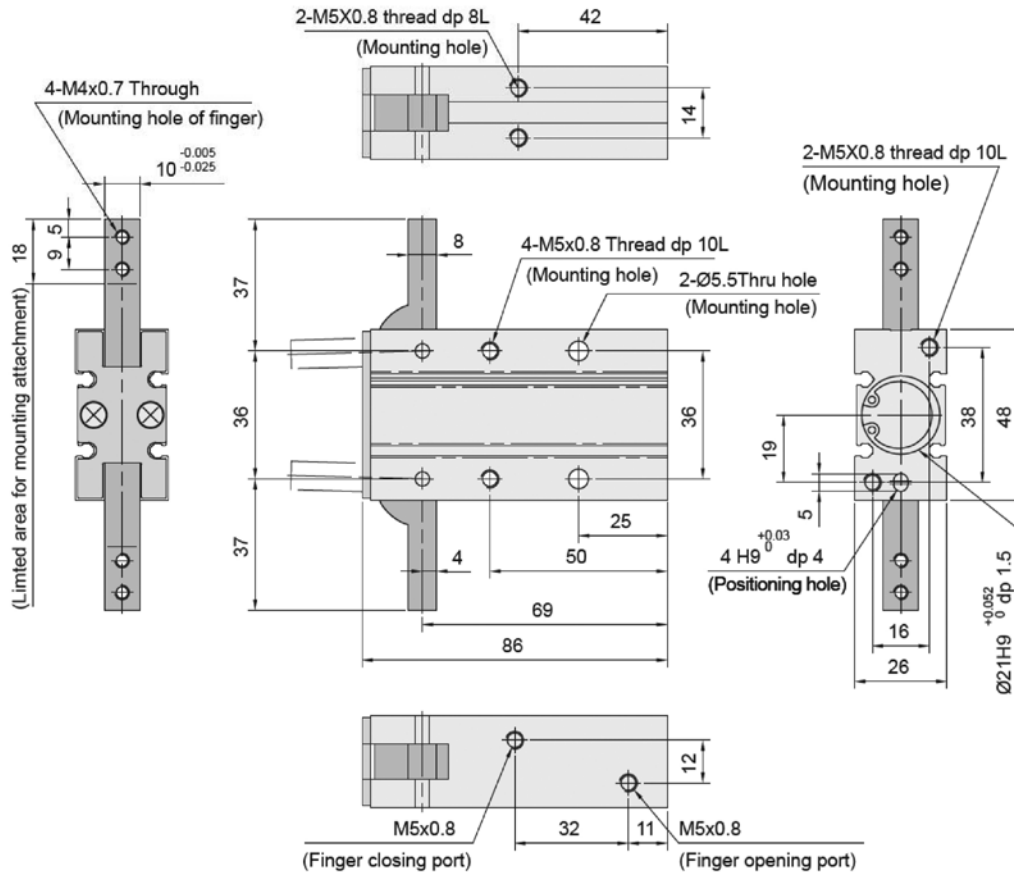
GR04F 010



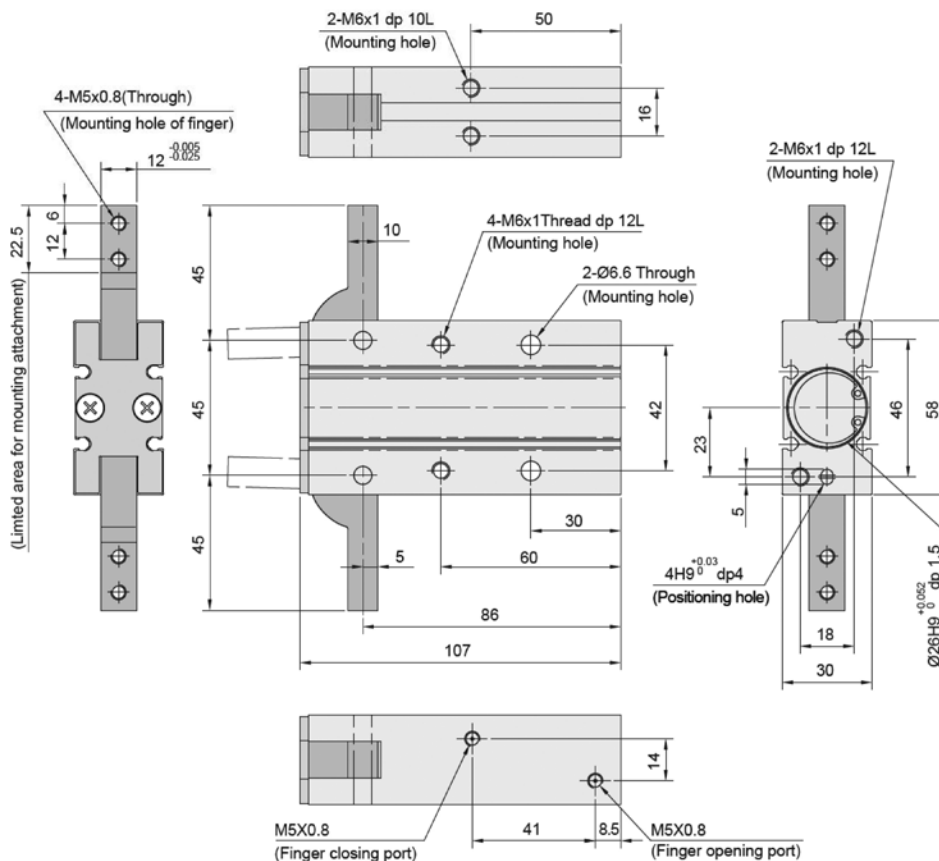
GR04F 016



GR04F 020



GR04F 025



SERIE GR05F - PINZE PNEUMATICHE 3 GRIFFE

PNEUMATIC 3 FINGERS GRIPPER
PNEUMATISCHER GREIFER MIT 3 BACKEN
PINCE PNEUMATIQUE A 3 DOIGTS
PINZA NEUMÁTICA DE 3 DEDOS
GARRA PNEUMÁTICA DE 3 DEDOS



CARATTERISTICHE TECNICHE

TECHNICAL CHARACTERISTICS
TECHNISCHE ANGABEN
CARACTÉRISTIQUES TECHNIQUES
CARACTERÍSTICAS TÉCNICAS
CARACTERÍSTICAS TÉCNICAS



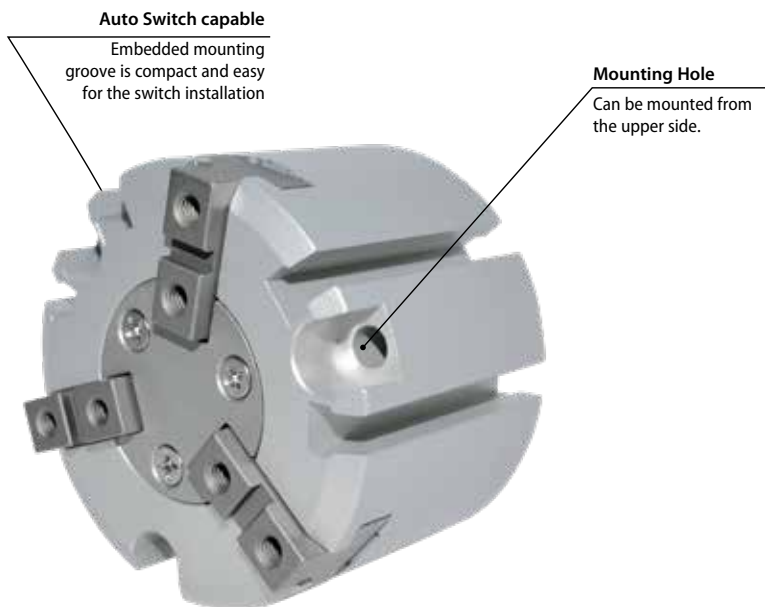
1907/2006

REACH ✓

2011/65/CE

RoHS ✓

SILICON
FREE



Materiali	IT
<ul style="list-style-type: none"> Corpo: Lega Alluminio Stelo: Acciaio Guarnizioni: NBR 	

Materials	GB
<ul style="list-style-type: none"> Body: Aluminum alloy Piston rod: Steel NBR seal 	

Materialien	DE
<ul style="list-style-type: none"> Körper: Aluminiumlegierung Kolbenstange: Stahl Dichtung: NBR 	

Matériaux	FR
<ul style="list-style-type: none"> Corps: Alliage d'aluminium Tige: Acier Joints: NBR 	

Materiales	ES
<ul style="list-style-type: none"> Cuerpo: Aleación de aluminio Eje: Acero Juntas: NBR 	

Materials	PT
<ul style="list-style-type: none"> Corpo: Liga de alumínio Haste: Aço Vedações: NBR 	



Pressioni

Pressures

Druckbereich

Pressions

Presiones

Pressões

Ø 25

2 bar (0.2 MPa)

6 bar (0.6 MPa)

Ø 32 ÷ 63

1 bar (0.1 MPa)

6 bar (0.6 MPa)



Temperature

Temperatures

Temperatur

Températures

Temperaturas

Temperaturas

-10 °C

+60 °C



Fluidi compatibili

Aria (Lubrificazione non necessaria).

Fluids

Air (Lubrication not necessary).

Geeignete Medien

Luft (Schmierung nicht erforderlich).

Fluides compatibles

Air (Lubrification pas nécessaire).

Fluidos compatibles

Aire (Lubrificación no necesaria).

Fluidos compatíveis

Ar (Lubrificação não necessária).



Alesaggi

Bores

Durchmesser

Diamètres

Diámetros

Diâmetros

25-32-40-50-63 mm



Ripetibilità

Action tolerance

Wiederholgenauigkeit

Répétitivité

Repetibilidad

Repetibilidade

± 0,01 mm



Frequenza massima d'esercizio

Max. Operating frequency

Maximale Betriebsfrequenz

Fréquence d'utilisation maximum

Frecuencia máxima de ejercicio

Frequência máxima de trabalho

120 c.p.m. (Ø 25)

60 c.p.m. (Ø 32 ÷ 63)



Peso della pinza

Gripper Weight

Gewicht Greifer

Poids de la pince

Peso de la pinza

Peso da garra

Ø				
25	32	40	50	63
140	237	351	541	992

(Unit: g)



Corsa totale di apertura/chiusura

Opening/Closing stroke

Oeffnungs/Schliesshub

Course d'ouverture/fermeture

Carrera de apertura/cierre

Curso de abertura/fechamento

Ø				
25	32	40	50	63
6	8	8	12	16

(Unit: mm)



Momento di presa a 5 bar

Holding Moment at 5 bar

Greifmoment bei 5 bar

Moment de préhension à 5 bar

Momento de agarre a 5 bar

Momento de pega a 5 bar

Ø				
25	32	40	50	63
E 42	74	118	187	335
I 47	82	130	204	359

(Unit: N)



Punto di presa

Holding point

Greifmoment

Moment de préhension

Punto de agarre

Ponto de pega



Forza effettiva di presa a 5 bar

Effective gripping force at 5 bar

Effektive Greifkraft bei 5 bar

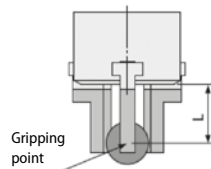
Force de préhension effective à 5 bar

Fuerza efectiva de agarre 5 bar

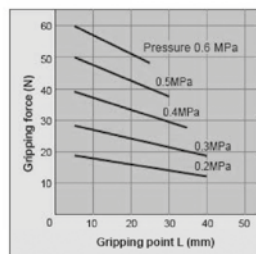
Força efetiva de agarre a 5 bar

E

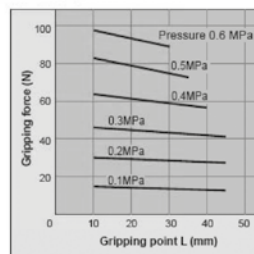
External grip



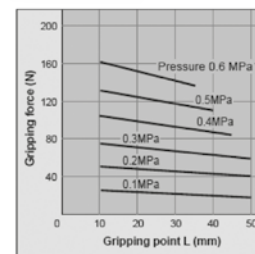
GR05F 025



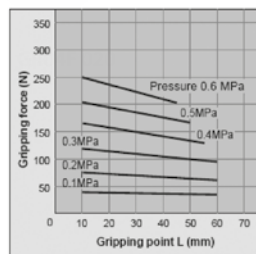
GR05F 032



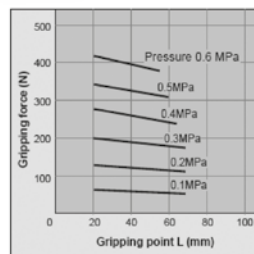
GR05F 040



GR05F 050

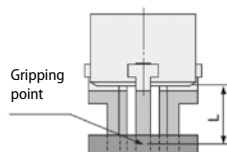


GR05F 063

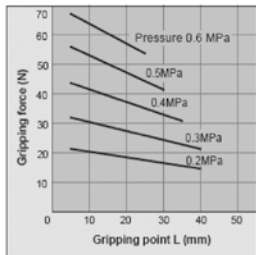


I

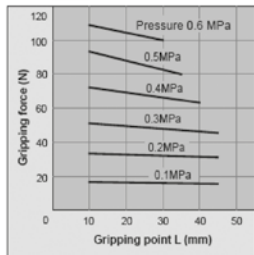
Internal grip



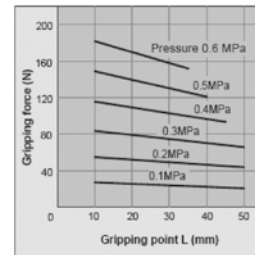
GR05F 025



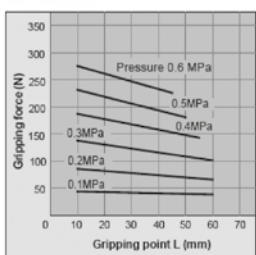
GR05F 032



GR05F 040



GR05F 050



GR05F 063

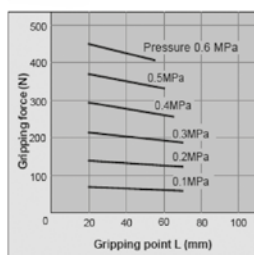




Tabella dei codici di ordinazione

- Ordering codes
- Bestellschlüssel
- Code de commande
- Tabla de codificación para pedidos
- Tabela de codificação para compra

SERIE	Ø mm
-------	---------

G R 0 5 F **0 2 5**

- | | |
|--------------------------|-----|
| Doppio Effetto Magnetico | 025 |
| Double Acting Magnetic | 032 |
| Doppelwirkend Magnetisch | 040 |
| Double Effet Magnétique | 050 |
| Doble efecto magnético | 063 |
| Dupla Ação Magnético | |



Sensori consigliati

- Sensors recommended
- Empfohlene Sensoren
- Capteurs recommandés
- Sensores recomendados
- Sensores aconselhados

DC 03 PM8 DC 04 PM8
DC 03 P2M DC 04 P2M

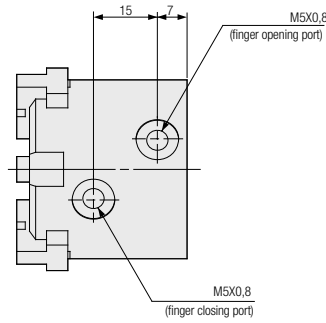
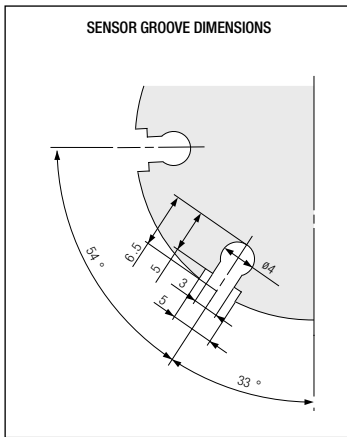
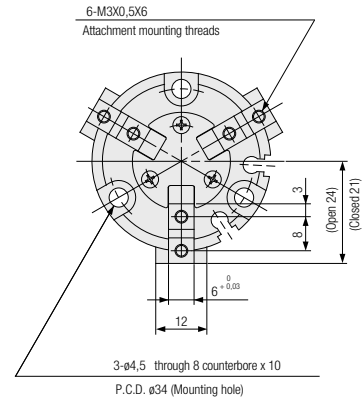
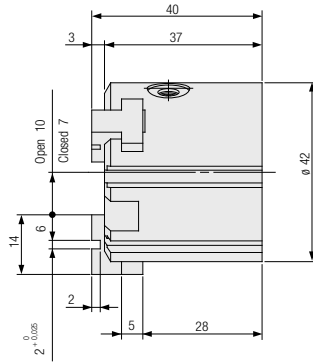
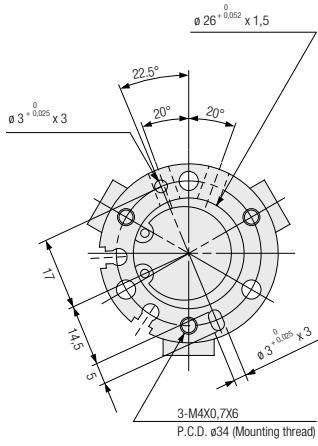


Adattatore Per Sensore

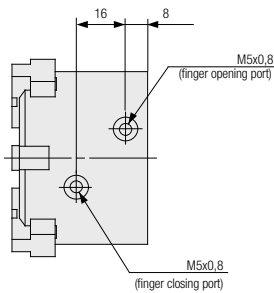
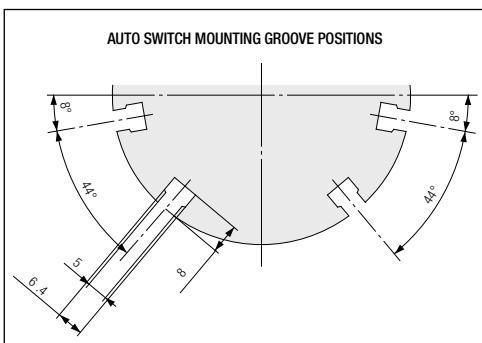
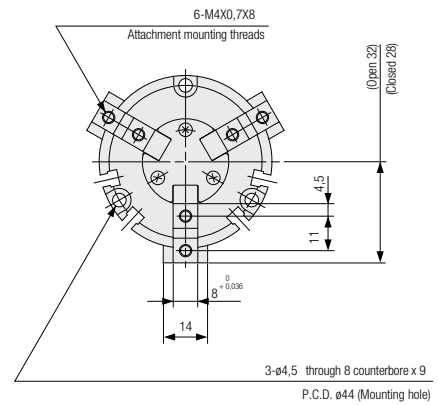
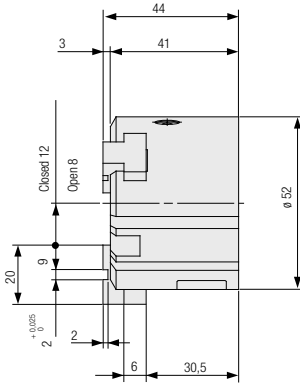
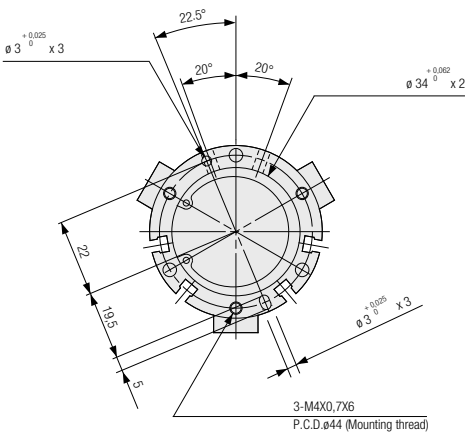
- Sensor Adapter
- Sensor Adapter
- Adaptateur Pour Capteur
- Adaptador Para Sensor
- Adaptador Para Sensor

DC 10 001

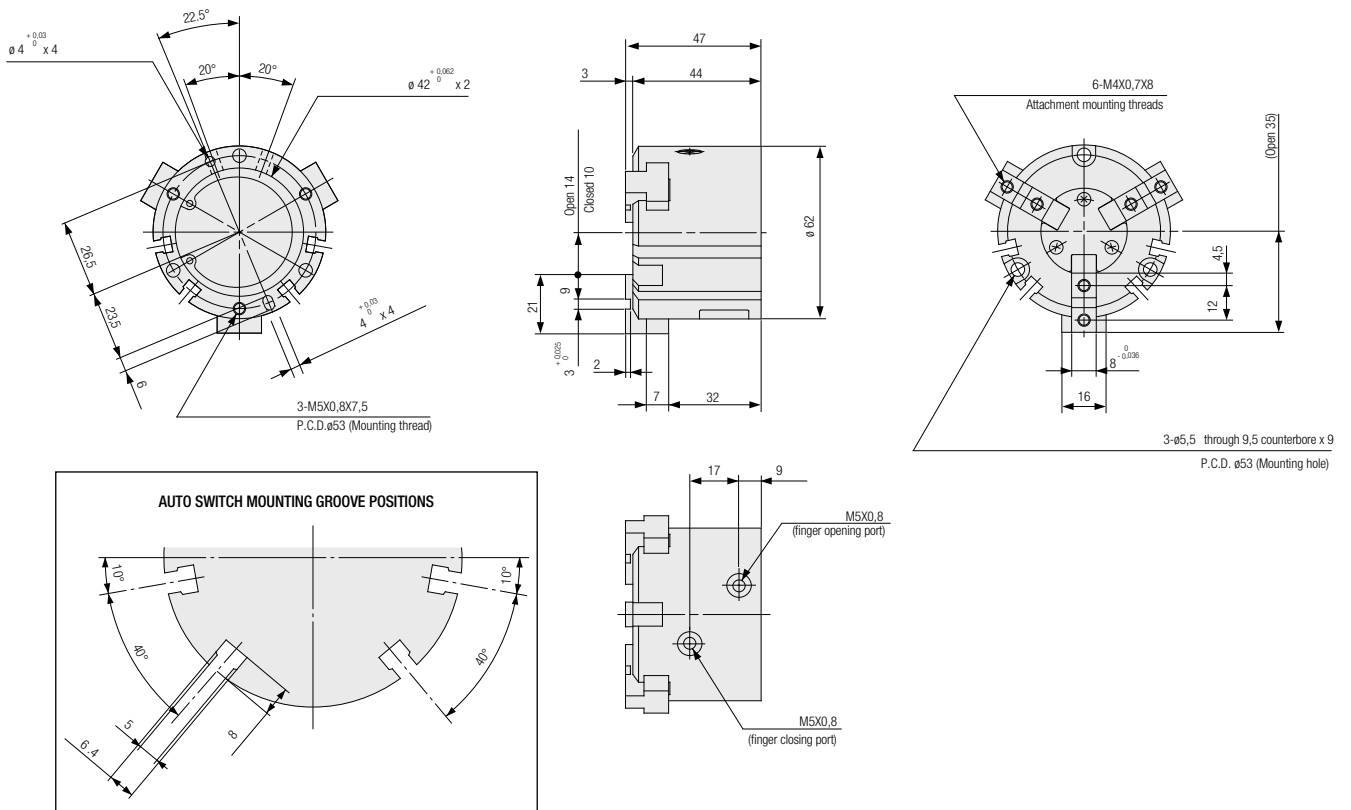
GR05F 025



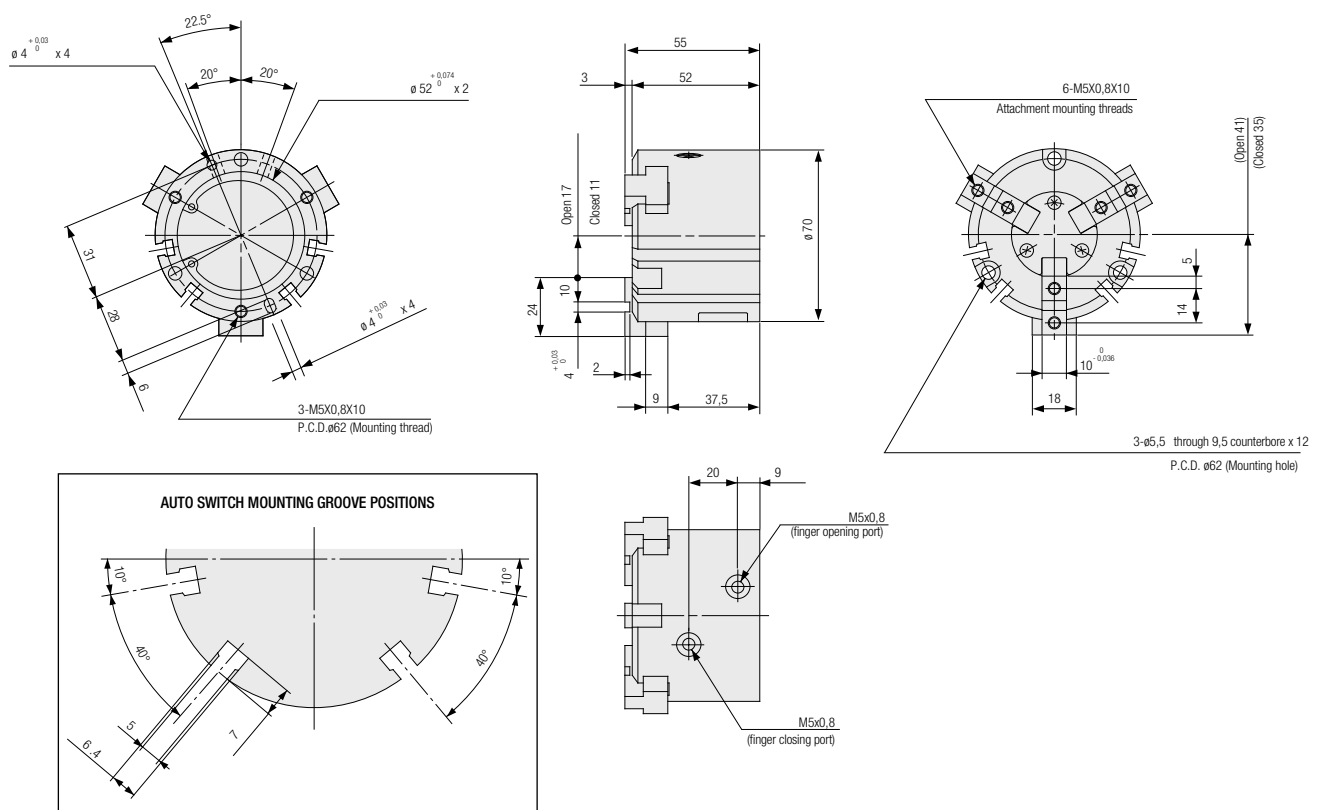
GR05F 032



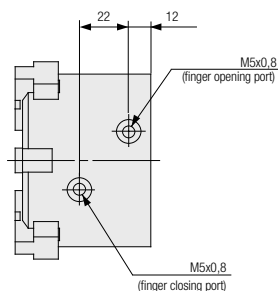
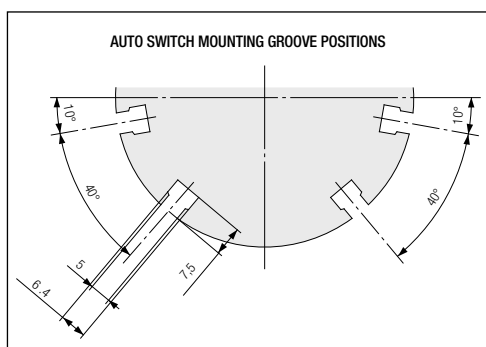
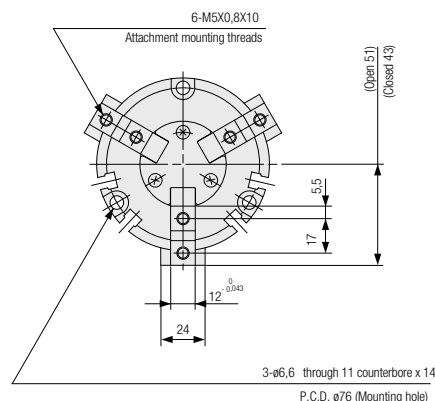
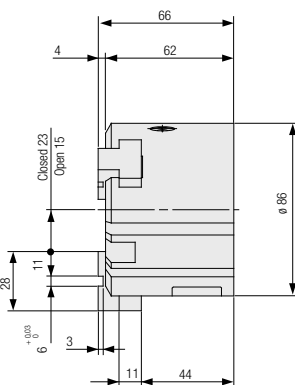
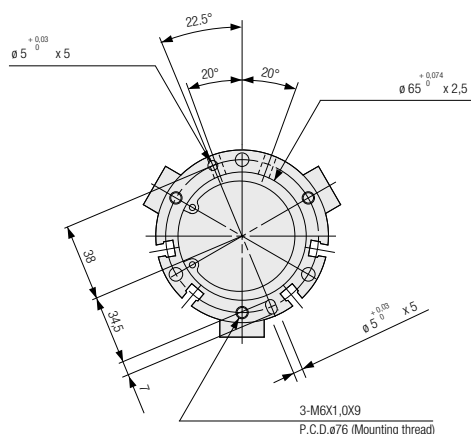
GR05F 040



GR05F 050



GR05F 063



Архангельск (8182)63-90-72
 Астана (7172)727-132
 Астрахань (8512)99-46-04
 Барнаул (3852)73-04-60
 Белгород (4722)40-23-64
 Брянск (4832)59-03-52
 Владивосток (423)249-28-31
 Волгоград (844)278-03-48
 Вологда (8172)26-41-59
 Воронеж (473)204-51-73
 Екатеринбург (343)384-55-89
 Иваново (4932)77-34-06

Ижевск (3412)26-03-58
 Иркутск (395)279-98-46
 Казань (843)206-01-48
 Калининград (4012)72-03-81
 Калуга (4842)92-23-67
 Кемерово (3842)65-04-62
 Киров (8332)68-02-04
 Краснодар (861)203-40-90
 Красноярск (391)204-63-61
 Курск (4712)77-13-04
 Липецк (4742)52-20-81
 Киргизия (996)312-96-26-47

Магнитогорск (3519)55-03-13
 Москва (495)268-04-70
 Мурманск (8152)59-64-93
 Набережные Челны (8552)20-53-41
 Нижний Новгород (831)429-08-12
 Новокузнецк (3843)20-46-81
 Новосибирск (383)227-86-73
 Омск (3812)21-46-40
 Краснодар (861)203-40-90
 Орел (4862)44-53-42
 Оренбург (3532)37-68-04
 Пенза (8412)22-31-16
 Казахстан (772)734-952-31

Пермь (342)205-81-47
 Ростов-на-Дону (863)308-18-15
 Рязань (4912)46-61-64
 Самара (846)206-03-16
 Санкт-Петербург (812)309-46-40
 Саратов (845)249-38-78
 Севастополь (8692)22-31-93
 Симферополь (3652)67-13-56
 Смоленск (4812)29-41-54
 Сочи (862)225-72-31
 Ставрополь (8652)20-65-13
 Таджикистан (992)427-82-92-69

Сургут (3462)77-98-35
 Тверь (4822)63-31-35
 Томск (3822)98-41-53
 Тула (4872)74-02-29
 Тюмень (3452)66-21-18
 Ульяновск (8422)24-23-59
 Уфа (347)229-48-12
 Хабаровск (4212)92-98-04
 Челябинск (351)202-03-61
 Череповец (8202)49-02-64
 Ярославль (4852)69-52-93

<https://aignep.nt-rt.ru/> || afp@nt-rt.ru