

SERIE 62000

ADATTATORI IN ACCIAIO INOX AISI 316 L
 STAINLESS STEEL AISI 316L THREADED ADAPTORS
 ADAPTER IN EDELSTAHL AISI 316 L
 ADAPTATEURS EN ACIER INOXYDABLE AISI 316L
 ACCESORIOS EN ACERO INOX AISI 316 L
 ADAPTADORES EM AÇO INOXIDÁVEL AISI 316L



CARATTERISTICHE TECNICHE
 TECHNICAL CHARACTERISTICS
 TECHNISCHE ANGABEN
 CARACTÉRISTIQUES TECHNIQUES
 CARACTERÍSTICAS TÉCNICAS
 CARACTERÍSTICAS TÉCNICAS



Norma di Riferimento
 Reference standard
 Entspricht der Norm
 Norme de référence
 Normativa de referencia
 Norma de referència



Pressioni

Pressures
 Druckbereich
 Pressions
 Presiones
 Pressões

- 0.99 bar (-0.099 MPa)
 140 bar (14 MPa)



Temperature

Temperatures
 Temperatur
 Températures
 Temperaturas
 Temperaturas

- 110 °C
 + 300 °C



Fluidi compatibili

Fluidi per Industria alimentare e chimica compatibili con i componenti del raccordo.

Fluids

Fluid for food and chemical industry compatible with fitting components.

Geeignete Medien

Medien für die Lebensmittel- und chemische Industrie, die beständig mit den Komponenten der Verschraubungen sind.

Fluides compatibles

Fluides alimentaires et chimiques compatibles avec les matériaux constituant les raccords.

Fluidos compatibles

Fluidos para industria alimentaria y química compatibles con los componentes del racor.

Fluidos compatíveis

Fluidos para Indústria alimentícia e química compatíveis com os componentes da conexão.



Filettatura

Gas conica conforme ISO 7.1, BS 21, DIN 2999.
 Gas cilindrica conforme ISO 228 Classe A.
 Metrica conforme ISO R/262.

IT

Threads

Tapered gas in conformity with ISO 7.1, BS 21, DIN 2999.
 Parallel gas in conformity with ISO 228 Class A.
 Metric in conformity with ISO R/262.

GB

Gewindearten

Konisches Gewinde nach Norm ISO 7.1, BS 21, DIN 2999.
 Zylindrisches Gewinde nach Norm ISO 228 Classe A.
 Metrisches Gewinde nach Norm ISO R/262.

DE

Filetages

Filetage conique conforme: ISO 7.1, BS 21, DIN 2999.
 Filetage cylindrique conforme: ISO 228 Class A.
 Filetage métrique conforme: ISO R/262.

FR

Roscas

Gas cónica conforme ISO 7.1, BS 21, DIN 2999.
 Gas cilíndrica conforme ISO 228 Classe A.
 Métrica conforme ISO R/262.

ES

Roscas

Gas conica conforme ISO 7.1, BS 21, DIN 2999.
 Gas paralela conforme ISO 228 Classe A.
 Métrica conforme ISO R/262.

PT

Архангельск (8182)63-90-72
 Астана (7172)727-132
 Астрахань (8512)99-46-04
 Барнаул (3852)73-04-60
 Белгород (4722)40-23-64
 Брянск (4832)59-03-52
 Владивосток (423)249-28-31
 Волгоград (844)278-03-48
 Вологда (8172)26-41-59
 Воронеж (473)204-51-73
 Екатеринбург (343)384-55-89
 Иваново (4932)77-34-06

Ижевск (3412)26-03-58
 Иркутск (395)279-98-46
 Казань (843)206-01-48
 Калининград (4012)72-03-81
 Калуга (4842)92-23-67
 Кемерово (3842)65-04-62
 Киров (8332)68-02-04
 Краснодар (861)203-40-90
 Красноярск (391)204-63-61
 Курск (4712)77-13-04
 Липецк (4742)52-20-81
 Киргизия (996)312-96-26-47

Магнитогорск (3519)55-03-13
 Москва (495)268-04-70
 Мурманск (8152)59-64-93
 Набережные Челны (8552)20-53-41
 Нижний Новгород (831)429-08-12
 Новокузнецк (3843)20-46-81
 Новосибирск (383)227-86-73
 Омск (3812)21-46-40
 Орел (4862)44-53-42
 Оренбург (3532)37-68-04
 Пенза (8412)22-31-16
 Казахстан (772)734-952-31

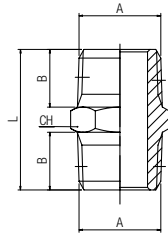
Пермь (342)205-81-47
 Ростов-на-Дону (863)308-18-15
 Рязань (4912)46-61-64
 Самара (846)206-03-16
 Санкт-Петербург (812)309-46-40
 Саратов (845)249-38-78
 Севастополь (8692)22-31-93
 Симферополь (3652)67-13-56
 Смоленск (4812)29-41-54
 Сочи (862)225-72-31
 Ставрополь (8652)20-65-13
 Таджикистан (992)427-82-92-69

Сургут (3462)77-98-35
 Тверь (4822)63-31-35
 Томск (3822)98-41-53
 Тула (4872)74-02-29
 Тюмень (3452)66-21-18
 Ульяновск (8422)24-23-59
 Уфа (3477)229-48-12
 Хабаровск (4212)92-98-04
 Челябинск (351)202-03-61
 Череповец (8202)49-02-64
 Ярославль (4852)69-52-93

62000

NIPPLO CONICO

NIPPLE (TAPER)
DOPPELNIPPEL KONISCH
MAMELON DOUBLE, CONIQUE
MACHÓN CÓNICO
NIPLE COM ROSCA CÔNICA

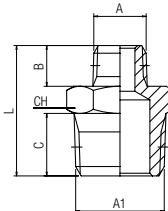


Code	A	B	L	CH	Pack.
62000 00 44 02 00	1/8	7.5	19.5	11	10
62000 00 44 03 00	1/4	11	27	14	10
62000 00 44 04 00	3/8	11.5	28	17	10
62000 00 44 05 00	1/2	14	33.5	22	10
62000 00 44 07 00	3/4	16.5	40	27	10

62020

NIPPLO DI RIDUZIONE CONICO

REDUCING NIPPLE (TAPER)
DOPPELNIPPEL KONISCH REDUZIERT
MAMELON DOUBLE INÉGAL, CONIQUE
MACHÓN CÓNICO DE REDUCCIÓN
NIPLE DE REDUÇÃO COM ROSCA CÔNICA

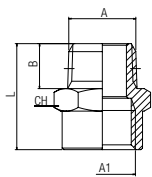


Code	A	A1	B	C	L	CH	Pack.
62020 00 44 AT 00	1/8	1/4	7.5	11	23.5	14	10
62020 00 44 3W 00	1/8	3/8	7.5	11.5	24	17	10
62020 00 44 7W 00	1/4	3/8	11	11.5	27.5	17	10
62020 00 44 8W 00	1/4	1/2	11	14	30.5	22	10
62020 00 44 AC 00	3/8	1/2	11.5	14	31	22	10
62020 00 44 AH 00	1/2	3/4	14	16.5	37.5	27	10

62040

RIDUZIONE CONICA

REDUCER (TAPER)
REDUZIERUNG KONISCH
GROSSISSEUR MÂLE CONIQUE / FEMELLE CYLINDRIQUE
REDUCCIÓN CÓNICA MACHO - HEMBRA
REDUÇÃO COM ROSCA CÔNICA

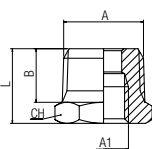


Code	A	A1	B	L	CH	Pack.
62040 00 44 AT 00	1/8	1/4	7.5	22	17	10
62040 00 44 7W 00	1/4	3/8	11	27	22	10
62040 00 44 8W 00	1/4	1/2	11	30	24	10
62040 00 44 AC 00	3/8	1/2	11.5	30.5	24	10
62040 00 44 AH 00	1/2	3/4	14	35	32	10

62080

RIDUZIONE CONICA

REDUCER (TAPER)
REDUZIERUNG KONISCH
RÉDUCTION MÂLE CONIQUE / FEMELLE CYLINDRIQUE
REDUCCIÓN CÓNICA
REDUÇÃO COM ROSCA CÔNICA



Code	A	A1	B	L	CH	Pack.
62080 00 44 5W 00	1/4	1/8	11	16	14	10
62080 00 44 9W 00	3/8	1/8	11.5	16.5	17	10
62080 00 44 AA 00	3/8	1/4	11.5	16.5	17	10
62080 00 44 AE 00	1/2	1/4	14	19.5	22	10
62080 00 44 AF 00	1/2	3/8	14	19.5	22	10
62080 00 44 AM 00	3/4	1/2	16.5	23.5	27	10

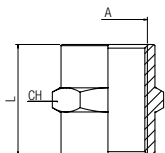
62300

MANICOTTO

SLEEVE
MUFFE
MANCHON
MANGUITO HEMBRA
LUVVA



COMPONENT



Code	A	L	CH	Pack.
62300 00 44 02 00	1/8	15	14	10
62300 00 44 03 00	1/4	22	17	10
62300 00 44 04 00	3/8	24	22	10
62300 00 44 05 00	1/2	30	27	10
62300 00 44 07 00	3/4	32	32	10

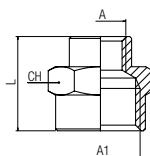
62310

MANICOTTO DI RIDUZIONE

REDUCING SLEEVE
MUFFE REDUZIERT
MANCHON INÉGAL
MANGUITO HEMBRA DE REDUCCIÓ
LUVVA DE REDUÇÃO



COMPONENT



Code	A	A1	L	CH	Pack.
62310 00 44 AT 00	1/8	1/4	19	17	10
62310 00 44 7W 00	1/4	3/8	23	22	10
62310 00 44 AC 00	3/8	1/2	27.5	24	10
62310 00 44 AH 00	1/2	3/4	30	30	10

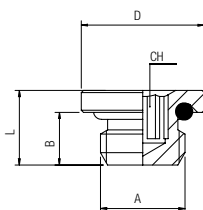
62315

TAPPO MASCHIO CILINDRICO ESAGONO INCASSATO

MALE PLUG (PARALLEL) WITH EXAGON EMBEDDED
GEWINDESTOPFEN RUND MIT INNENSECHSKANT ZYLINDRISCH
BOUCHON, CYLINDRIQUE À 6 PANS CREUX
TAPÓN MACHO CILÍNDRICO HEXÁGONO INTERIOR CON TÓRICA (FKM)
TAMPÃO COM ROSCA PARALELA COM SEXTAVADO INTERNO



COMPONENT



Code	A	B	L	D	CH	Pack.
62315 00 005	M5	4	6	8	2	10
62315 00 011	M7	5	7.5	9.5	3	10
62315 00 001	1/8	6	8.5	14	5	10
62315 00 002	1/4	8	11	18	6	10
62315 00 003	3/8	9	12.5	20	8	10
62315 00 004	1/2	10	13.5	25	10	10



Temperature

min max

- 15 °C

+ 190 °C

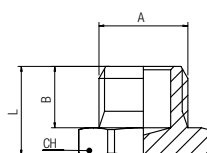
62320

TAPPO MASCHIO CILINDRICO

MALE PLUG (PARALLEL)
GEWINDESTOPFEN MIT SECHSKANT ZYLINDRISCH
BOUCHON, CYLINDRIQUE À 6 PANS MÂLE
TAPÓN MACHO CILÍNDRICO
TAMPÃO COM ROSCA PARALELA



COMPONENT

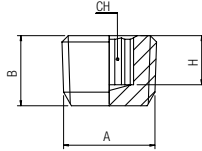


Code	A	B	L	CH	Pack.
62320 00 44 02 00	1/8	6.5	10	14	10
62320 00 44 03 00	1/4	9	13	17	10
62320 00 44 04 00	3/8	9.5	13.5	19	10
62320 00 44 05 00	1/2	10	14.5	24	10
62320 00 44 07 00	3/4	11	16	30	10

62325

TAPPO MASCHIO CONICO DIN 906

MALE PLUG (TAPER) DIN 906
 GEWINDESTOPFEN KONISCH
 BOUCHON, CONIQUE À 6 PANS CREUX
 TAPÓN MACHO CÓNICO HEXÁGONO INTERIOR
 TAMPÃO COM ROSCA CÔNICA



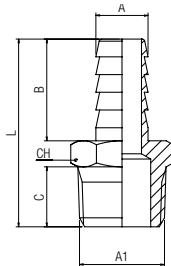
Code	A	B	H	CH	Pack.
62325 00 44 02 00	1/8	7.5	5	5	10
62325 00 44 03 00	1/4	10	7	6	10
62325 00 44 04 00	3/8	11	7	8	10
62325 00 44 05 00	1/2	13	8	10	10

62340

PORTAGOMMA MASCHIO CONICO

MALE HOSE ADAPTER (TAPER)
 EINSCHRAUBTÜLLE FÜR SCHLAUCH KONISCH
 DOUILLE ANNELÉE, CONIQUE
 ESPIGA MACHO CÓNICA
 ESPIGAO COM ROSCA CÔNICA

New

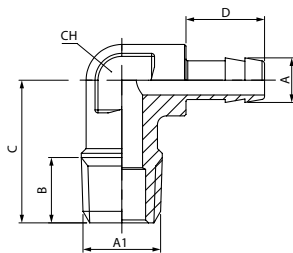


Code	A	A1	B	C	L	CH	Pack.
62340 00 44 BS 00	6	1/8	19.5	7.5	32	11	10
62340 00 44 BZ 00	7	1/8	19.5	7.5	32	11	10
62340 00 44 BX 00	7	1/4	19.5	11	35.5	14	10
62340 00 44 BJ 00	8	1/4	19.5	11	35.5	14	10
62340 00 44 CB 00	9	1/4	19.5	11	35.5	14	10
62340 00 44 CC 00	9	3/8	19.5	11.5	36	17	10
62340 00 44 CE 00	10	1/8	19.5	7.5	32	12	10
62340 00 44 CF 00	10	1/4	19.5	11	35.5	14	10
62340 00 44 CG 00	10	3/8	19.5	11.5	36	17	10
62340 00 44 CH 00	10	1/2	19.5	14	39	22	10
62340 00 44 CI 00	12	1/4	19.5	11	35.5	14	10
62340 00 44 CL 00	12	3/8	19.5	11.5	36	17	10
62340 00 44 CM 00	12	1/2	19.5	14	39	22	10
62340 00 44 CN 00	14	3/8	19.5	11.5	36	17	10
62340 00 44 DB 00	14	1/2	19.5	14	39	22	10
62340 00 44 CR 00	16	1/2	19.5	14	39	22	10
62340 00 44 CZ 00	18	1/2	19.5	14	39	22	10
62340 00 44 CX 00	18	3/4	19.5	16.5	43.5	27	10
62340 00 44 CJ 00	20	1/2	19.5	14	39	22	10
62340 00 44 DH 00	20	3/4	19.5	13.5	40	27	10

62355

RACCORDO A L PORTAGOMMA MASCHIO

MALE HOSE ADAPTER ELBOW
 WINKELSCHLAUCHTÜLLE AUSSENGEW.
 DOUILLE ANNELÉE COUDÉE
 ESPIGA A L MACHO
 ESPIGAO EM "L" COM ROSCA MACHO

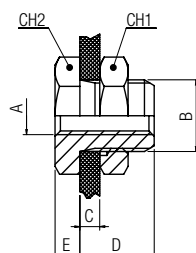


Code	A	A1	B	C	D	CH	Pack.
62355 00 44 BS 00	6	1/8	7.5	18	13.2	10	10
62355 00 44 BT 00	6	1/4	11	24	13.2	12	10
62355 00 44 BZ 00	7	1/8	7.5	18	13.2	10	10
62355 00 44 BX 00	7	1/4	11	24	13.2	12	10
62355 00 44 CB 00	9	1/4	11	24	13.2	12	10

62360

RACCORDO DI ATTRAVERSAMENTO

BULKHEAD CONNECTOR
 SCHOTTVERSCHRAUBUNG
 TRAVERSÉE DE CLOISON
 RACOR PASATABIQUES
 CONEXÃO PASSA-MURO



Code	A	B	C	D	E	CH1	CH2	Pack.
62360 000 02	1/8	16.5	9	14	4	22	19	10
62360 000 03	1/4	20.5	15	21	4	27	24	10
62360 000 04	3/8	26.5	14	21	5	32	30	10
62360 000 05	1/2	28.5	20	27	6	36	32	10
62360 000 06	3/4	34.5	22.5	30	6	41	41	10
62360 000 07	1"	42.5	24.5	34	8	50	46	10

62400

RACCORDO A T FEMMINA

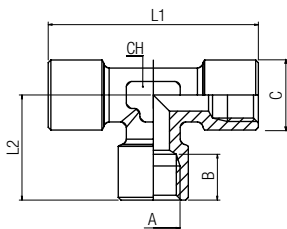
FEMALE TEE

T-VERSCHRAUBUNG MIT INNENGEWINDE

TÉ FEMELLE

RACOR A T HEMBRA

CONEXÃO EM "T" COM ROSCAS FÊMEAS



Code	A	B	C	L1	L2	CH	Pack.
62400 00 44 02 00	1/8	8.5	13	37	18.5	12	10
62400 00 44 03 00	1/4	11	16.5	49	24.5	12	10
62400 00 44 04 00	3/8	12	20.5	54	29	15	10
62400 00 44 05 00	1/2	15	25.5	64	34	20	10

62420

RACCORDO A T FEMMINA CENTRALE

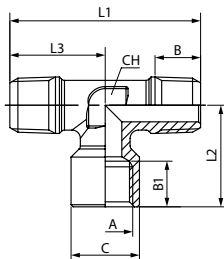
CENTRE LEG FEMALE TEE

T-VERSCHRAUBUNG INNENGEW. MITTIG

TÉ ÉGAL MÂLE, CENTRE FEMELLE

RACOR A T HEMBRA CENTRAL

CONEXÃO EM "T" COM ROSCA FÊMEA CENTRAL



Code	A	B	B1	C	L1	L2	L3	CH	Pack.
62420 00 44 02 00	1/8	7.5	8.5	13	36	18.5	18	12	10
62420 00 44 03 00	1/4	11	11	16.5	46	24.5	23	12	10
62420 00 44 04 00	3/8	11.5	12	20.5	51	29	25.5	15	10
62420 00 44 05 00	1/2	14	15	25.5	59	34	29.5	20	10

62430

RACCORDO A T FEMMINA LATERALE

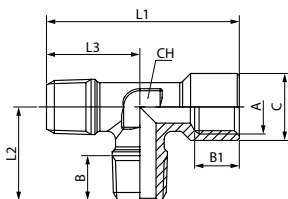
OFF SET FEMALE TEE

T-VERSCHRAUBUNG INNENGEW. SEITLICH

TÉ ÉGAL MÂLE, EN BOUT FEMELLE

RACOR A T HEMBRA LATERAL

CONEXÃO EM "T" COM ROSCA FÊMEA LATERAL



Code	A	B	B1	C	L1	L2	L3	CH	Pack.
62430 00 44 02 00	1/8	7.5	8.5	13	36.5	18	18	12	10
62430 00 44 03 00	1/4	11	11	16.5	47.5	23	23	12	10
62430 00 44 04 00	3/8	11.5	12	20.5	52.5	27.5	25.5	15	10
62430 00 44 05 00	1/2	14	15	25.5	61.5	31.5	29.5	20	10

62440

RACCORDO A T MASCHIO CENTRALE

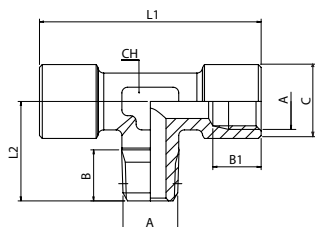
CENTRE LEG MALE TEE

T-VERSCHRAUBUNG MIT INNEN/AUSSENGEWINDE

TÉ À PIQUAGE MÂLE CENTRAL

RACOR A T MACHO CENTRAL

CONEXÃO EM "T" COM ROSCA CENTRAL MACHO



Code	A	B	B1	C	L1	L2	CH	Pack.
62440 00 44 02 00	1/8	7.5	8.5	13	37	17.5	12	10
62440 00 44 03 00	1/4	11	11	16.5	49	23	12	10
62440 00 44 04 00	3/8	11.5	12	20.5	54	27.5	15	10
62440 00 44 05 00	1/2	14	15	25.2	64	31.5	20	10

62450

RACCORDO A T MASCHIO LATERALE

OFF SET MALE TEE

L-VERSCHRAUBUNG MIT INNEN/AUSSENGEWINDE

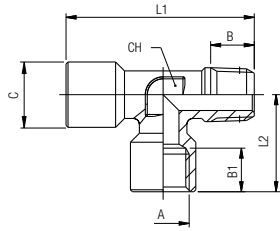
TÉ À PIQUAGE MÂLE LATÉRAL

RACOR A T MACHO LATERAL

CONEXÃO EM "T" COM ROSCA LATERAL MACHO



COMPONENT



Code	A	B	B1	C	L1	L2	CH	Pack.
62450 00 44 02 00	1/8	7.5	8.5	13	36	18.5	12	10
62450 00 44 03 00	1/4	11	11	16.5	47.5	24.5	12	10
62450 00 44 04 00	3/8	11.5	12	20.5	52.5	29	15	10
62450 00 44 05 00	1/2	14	15	25.2	61.5	34	20	10

62500

RACCORDO A L MASCHIO

MALE ELBOW

WINKELVERSCHRAUBUNG AUSSENGEW

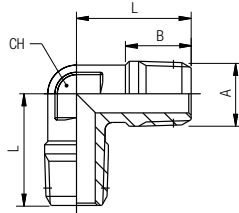
EQUERRE MÂLE

RACOR A L MACHO

CONEXÃO EM "L" COM ROSCA MACHO



COMPONENT



Code	A	B	L	CH	Pack.
62500 00 44 02 00	1/8	7.5	18	10	10
62500 00 44 03 00	1/4	11	24	12	10
62500 00 44 04 00	3/8	11.5	27	15	10
62500 00 44 05 00	1/2	14	29.5	20	10

62510

RACCORDO A L FEMMINA

FEMALE ELBOW

WINKELVERSCHRAUBUNG MIT INNENGEWINDE

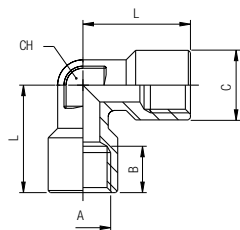
EQUERRE FEMELLE

RACOR A L HEMBRA

CONEXÃO EM "L" COM ROSCAS FÊMEAS



COMPONENT



Code	A	C	B	L	CH	Pack.
62510 00 44 02 00	1/8	13	8.5	21	10	10
62510 00 44 03 00	1/4	16.5	11	25.5	12	10
62510 00 44 04 00	3/8	20.5	12	28	15	10
62510 00 44 05 00	1/2	25.5	15	32	20	10

62520

RACCORDO A L MASCHIO FEMMINA

MALE-FEMALE ELBOW

WINKELVERSCHRAUBUNG MIT INNEN/AUSSENGEWINDE

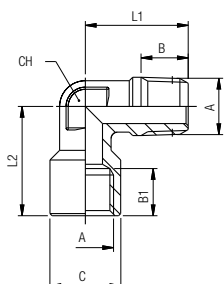
EQUERRE MÂLE / FEMELLE

RACOR A L MACHO-HEMBRA

CONEXÃO EM "L" MACHO-FÊMEA



COMPONENT

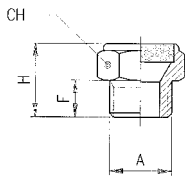


Code	A	B	B1	C	L1	L2	CH	Pack.
62520 00 44 02 00	1/8	7.5	8.5	13	18	21	10	10
62520 00 44 03 00	1/4	11	11	16.5	24	25.5	12	10
62520 00 44 04 00	3/8	11.5	12	20.5	27	28	15	10
62520 00 44 05 00	1/2	14	15	25.5	29.5	32	20	10

62540

SILENZIATORE

SILENCER
SCHALLDÄMPFER
SILENCIEUX D'ÉCHAPPEMENT
SILENCIADOR
SILENCIADOR



Code	A	F	H	CH	dB*	Pack.
62540 00 001	1/8	8	15	14	73	10
62540 00 002	1/4	8	15	17	74	10
62540 00 003	3/8	10	18	22	86	10
62540 00 004	1/2	12	22	27	80	10

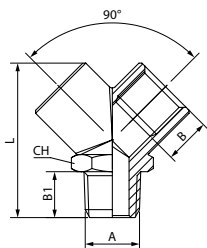
	min	max
Temperature	- 20 °C	+ 300 °C
Pressure	10 bar	
Soglia di filtrazione - Filtration threshold - Filterfeinheit Capacité de filtration - Grado de filtración - Limite de filtragem	70 µm	

dB* Livello di rumore in (dB) a 6 bar - Noise level in (dB) at 6 bar
Geräuschpegel (dB) bei 6 bar - Niveau sonore (dB) à 6 bar
Nivel de ruido en (dB) a 6 bar - Nivel de ruído em (dB) a 6 bar

62600

RACCORDO A Y 90° MASCHIO CENTRALE

CENTRAL MALE Y 90°
Y-VERSCHRAUBUNG 90° AUSSEN-/INNENGEW.
Y ÉGAL À 90° MALE AU CENTRE
RACOR A Y 90° MACHO CENTRAL
CONEXÕES EM "Y" 90° ROSCA MACHO CENTRAL

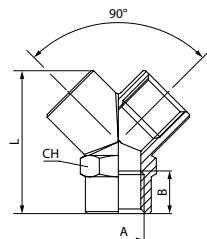


Code	A	B	B1	L	CH	Pack.
62600 00 44 03 00	1/4	11	11	37	17	10
62600 00 44 04 00	3/8	11.5	12.5	46	22	10
62600 00 44 05 00	1/2	14	16.5	58	26	10

62610

RACCORDO A Y 90° FEMMINA

FEMALE Y 90°
Y-VERSCHRAUBUNG 90° INNENGEW.
Y ÉGAL FEMELLE
RACOR A Y 90° HEMBRA
CONEXÃO EM "Y" COM ROSCA FÊMEA



Code	A	B	L	CH	Pack.
62610 00 44 03 00	1/4	11	37	17	10
62610 00 44 04 00	3/8	11	46	22	10
62610 00 44 05 00	1/2	14	58	26	10

Архангельск (8182)63-90-72
Астана (7172)727-132
Астрахань (8512)99-46-04
Барнаул (3852)73-04-60
Белгород (4722)40-23-64
Брянск (4832)59-03-52
Владивосток (423)249-28-31
Волгоград (844)278-03-48
Вологда (8172)26-41-59
Воронеж (473)204-51-73
Екатеринбург (343)384-55-89
Иваново (4932)77-34-06

Ижевск (3412)26-03-58
Иркутск (395)279-98-46
Казань (843)206-01-48
Калининград (4012)72-03-81
Калуга (4842)92-23-67
Кемерово (3842)65-04-62
Киров (8332)68-02-04
Краснодар (861)203-40-90
Красноярск (391)204-63-61
Курск (4712)77-13-04
Липецк (4742)52-20-81
Киргизия (996)312-96-26-47

Магнитогорск (3519)55-03-13
Москва (495)268-04-70
Мурманск (8152)59-64-93
Набережные Челны (8552)20-53-41
Нижегород (831)429-08-12
Новокузнецк (3843)20-46-81
Новосибирск (383)227-86-73
Омск (3812)21-46-40
Орел (4862)44-53-42
Оренбург (3532)37-68-04
Пenza (8412)22-31-16
Казахстан (772)734-952-31

Пермь (342)205-81-47
Ростов-на-Дону (863)308-18-15
Рязань (4912)46-61-64
Самара (846)206-03-16
Санкт-Петербург (812)309-46-40
Саратов (845)249-38-78
Севастополь (8692)22-31-93
Симферополь (3652)67-13-56
Смоленск (4812)29-41-54
Сочи (862)225-72-31
Ставрополь (8652)20-65-13
Таджикистан (992)427-82-92-69

Сургут (3462)77-98-35
Тверь (4822)63-31-35
Томск (3822)98-41-53
Тула (4872)74-02-29
Тюмень (3452)66-21-18
Ульяновск (8422)24-23-59
Уфа (347)229-48-12
Хабаровск (4212)92-98-04
Челябинск (351)202-03-61
Череповец (8202)49-02-64
Ярославль (4852)69-52-93